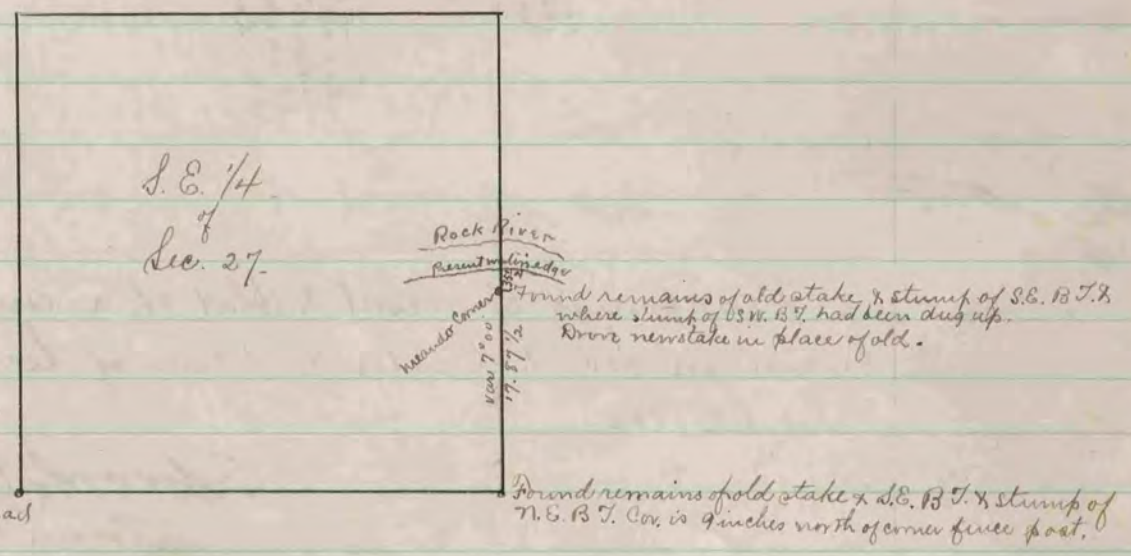


The above is a record & plat of a survey made by me on the
 S 1/4 of Section 4. Fulton May 29, 1873.
 Edward Rager
 County Surveyor



The above is a record & plat of a survey made by me on the
 S.E. 1/4 of Sec. 27 Rock. Nov. 21, 1887.
 Edward Rager
 County Surveyor