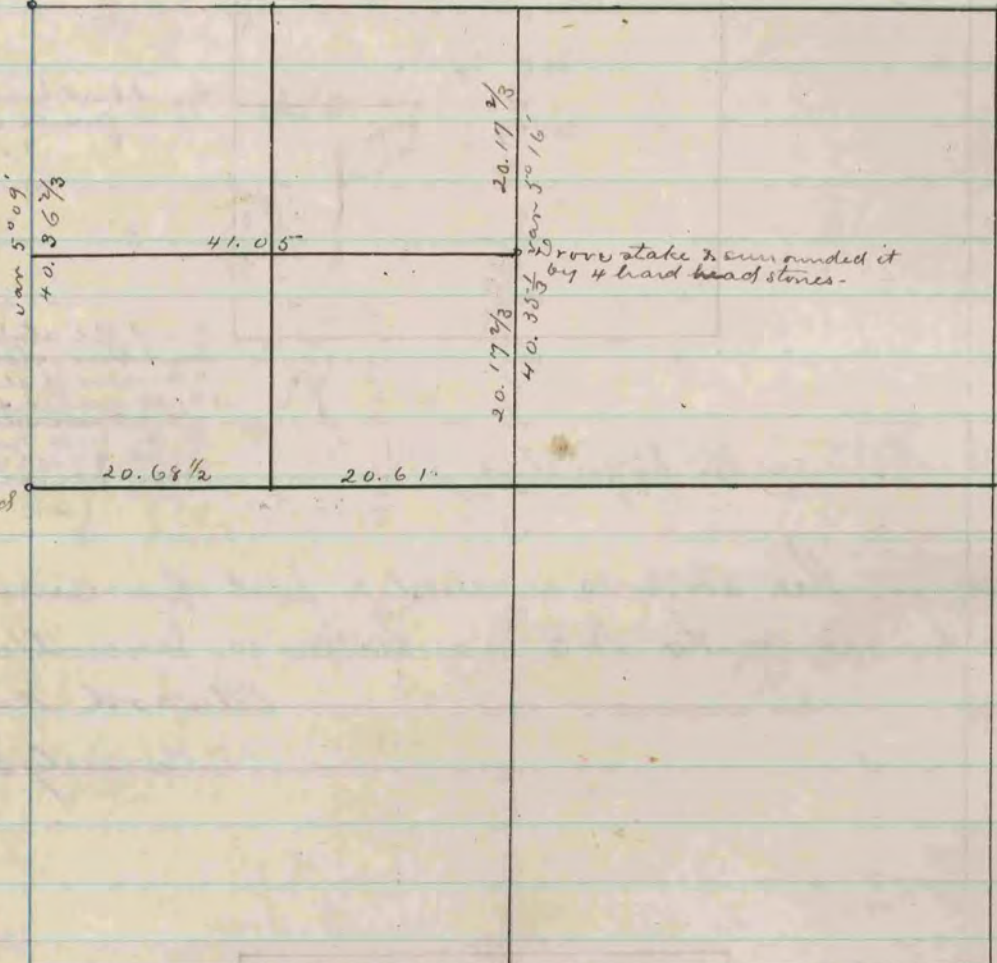


49-9

Found old stake set by dock, also large hard headstone by it. It is used in old 187 stump. Left bottom of old stake in ground & set over it limestone $17\frac{1}{2} \times 8 \times 2\frac{1}{2}$. It is surrounded by 4 large hard head stones.



Found stake surrounded by 3 hard headstones.

{ See Book I. Page 246 -
County Surveyor's Records. }

The above is a record & plat of a survey made by me on section 12 Spring Valley. May 24. 1887 -
Edward Ruger
County Surveyor

COUNTY SURVEYOR
RECORD 2 1869-1900