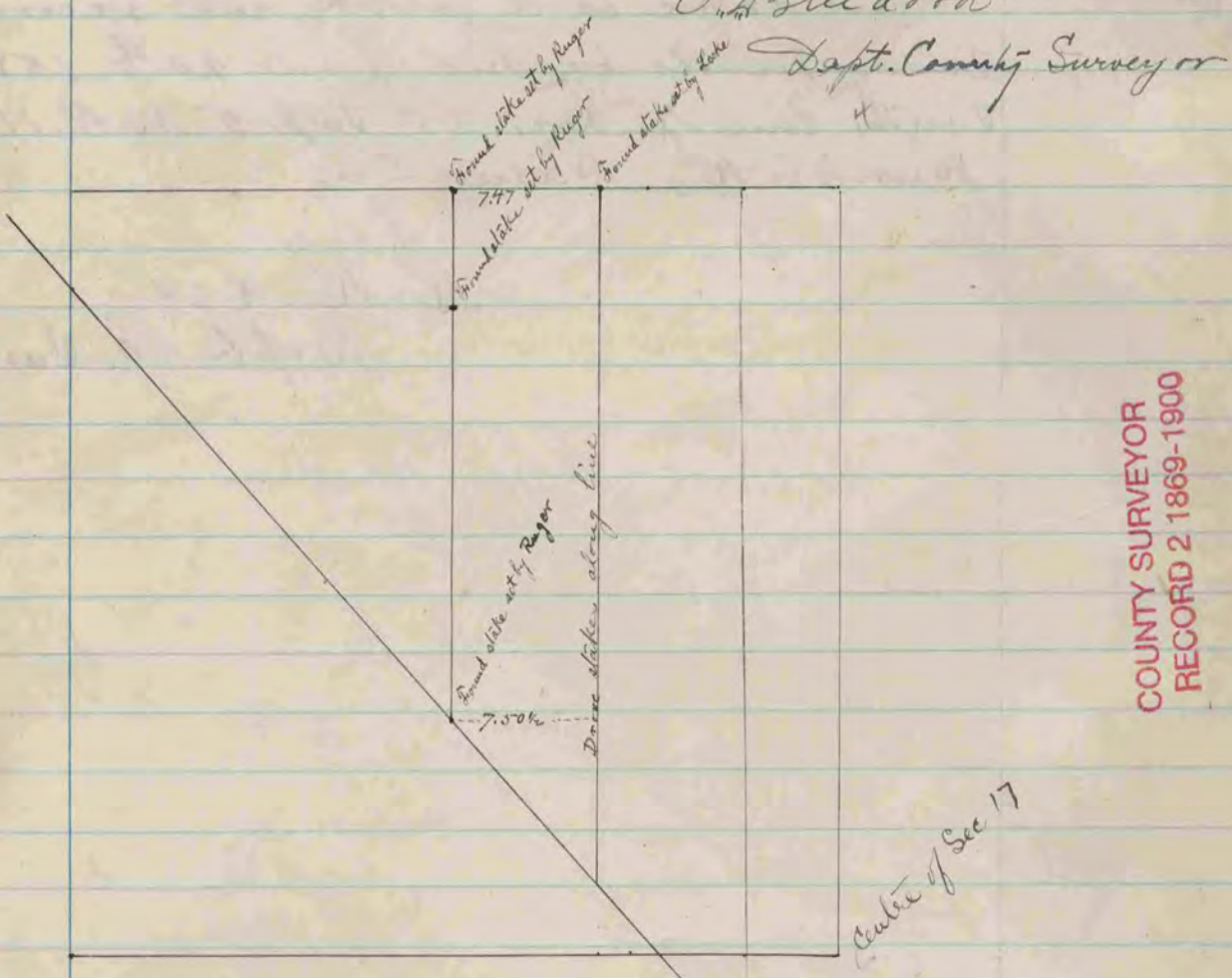


The above is a record and plat of a survey made by me
 on SW 1/4 section 26, Rock, Dec. 4 + 5, 1889
 O. G. Bledorn
 Dept. County Surveyor



The above is a record and plat of a survey made by me
 of N.W. 1/4 sec 17, Johnston, Dec. 7, 1889
 O. G. Bledorn
 Dept. County Surveyor

COUNTY SURVEYOR
 RECORD 2 1869-1900