

Mon

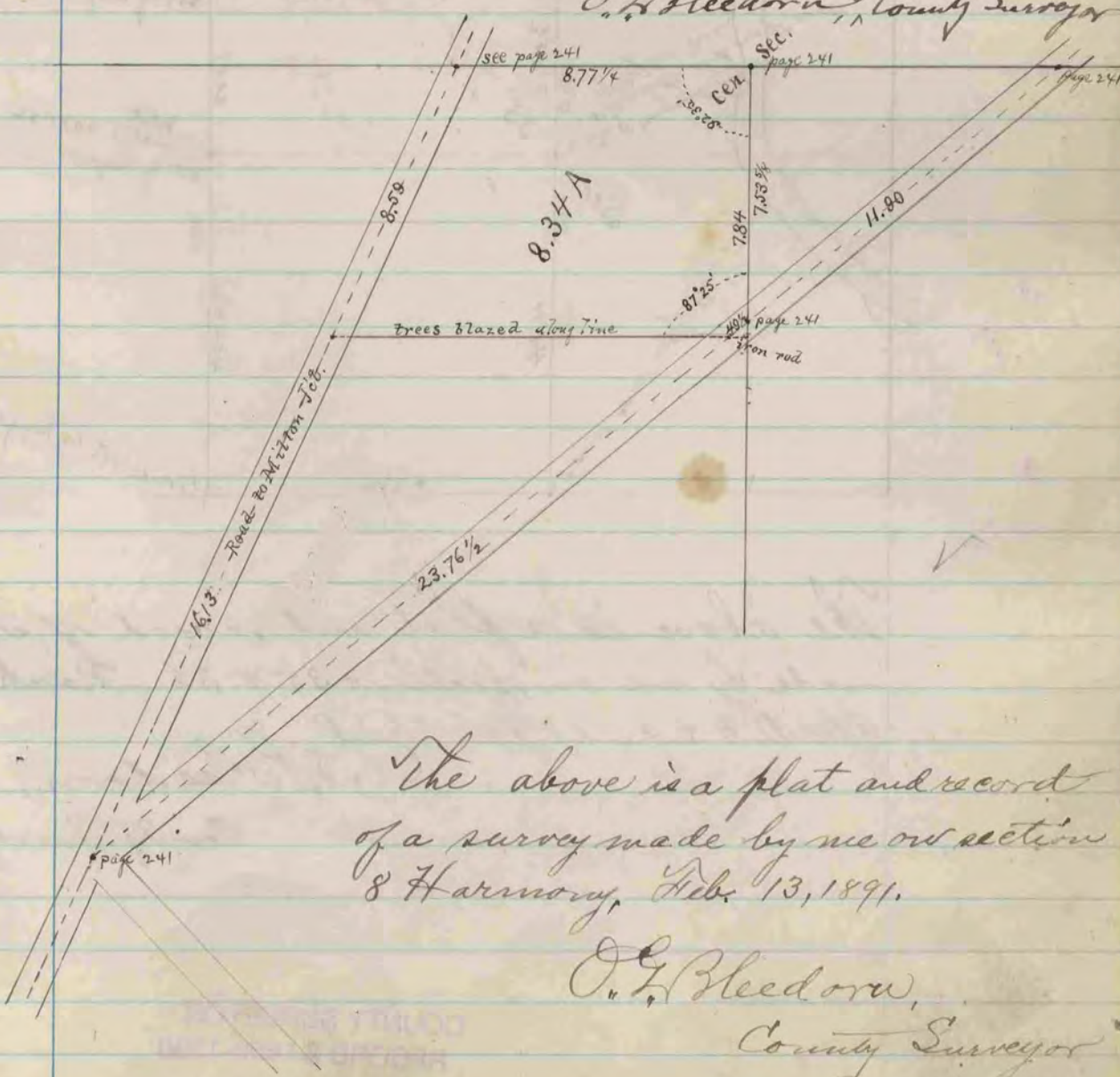
Found limestone set by Locke

see sec 5
3.79 1/2
Mon



The above is a plat & record of a survey made by me on NE 1/4
 Section 6 Magnolia Oct 25, 1890.

O. L. Bleedorn, Deft
 County Surveyor



The above is a plat and record
 of a survey made by me on section
 8 Harmony, Feb. 13, 1891.

O. L. Bleedorn,
 County Surveyor