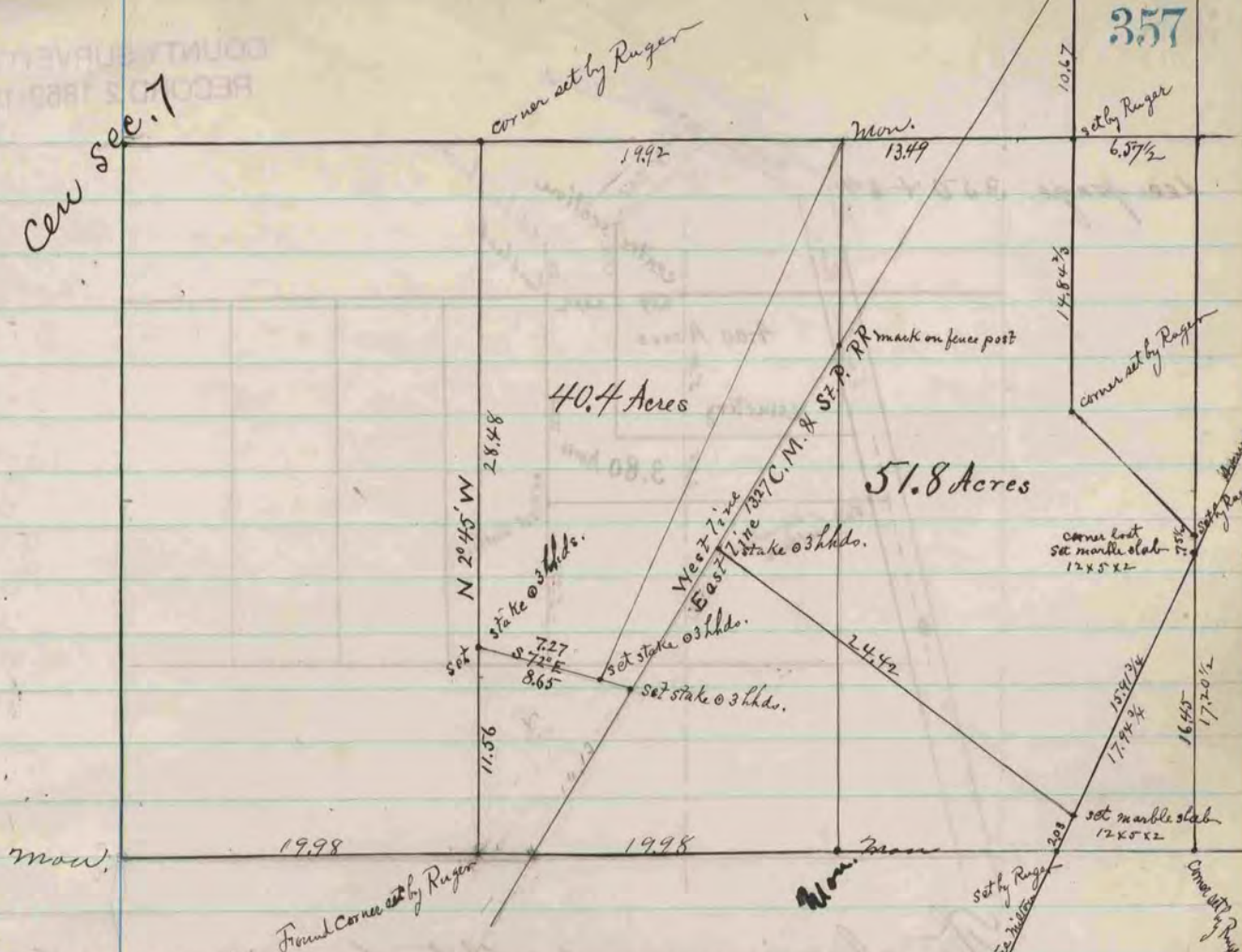
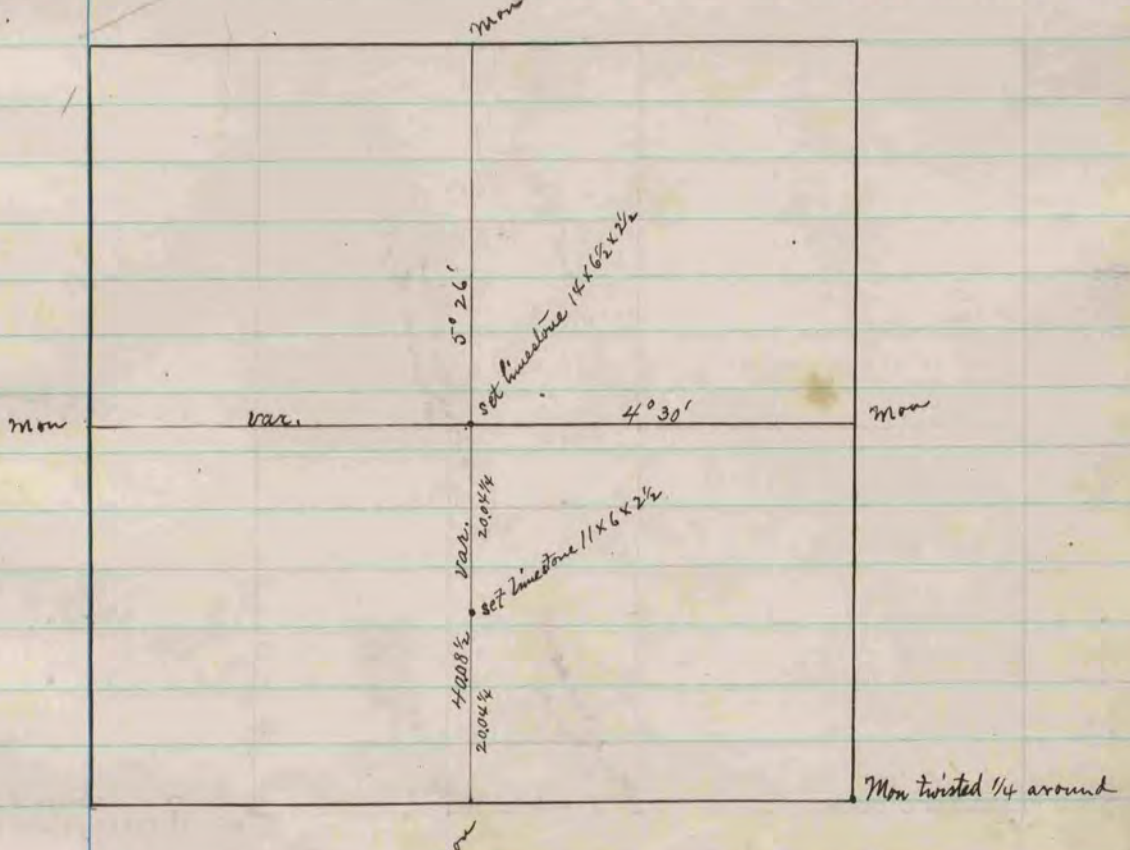


Corr sec. 7



The above is a record & plat of a survey made by me on the SE 1/4 of section 7 Harmony and the W 1/2 of SW 1/4 section 8 Harmony Oct 6 & 7, 1891.
 J. L. Bleedor in County Surveyor



The above is a record & plat of a survey made by me on section 30 La Prairie Sept 22, 1891.
 J. L. Bleedor,
 County Surveyor