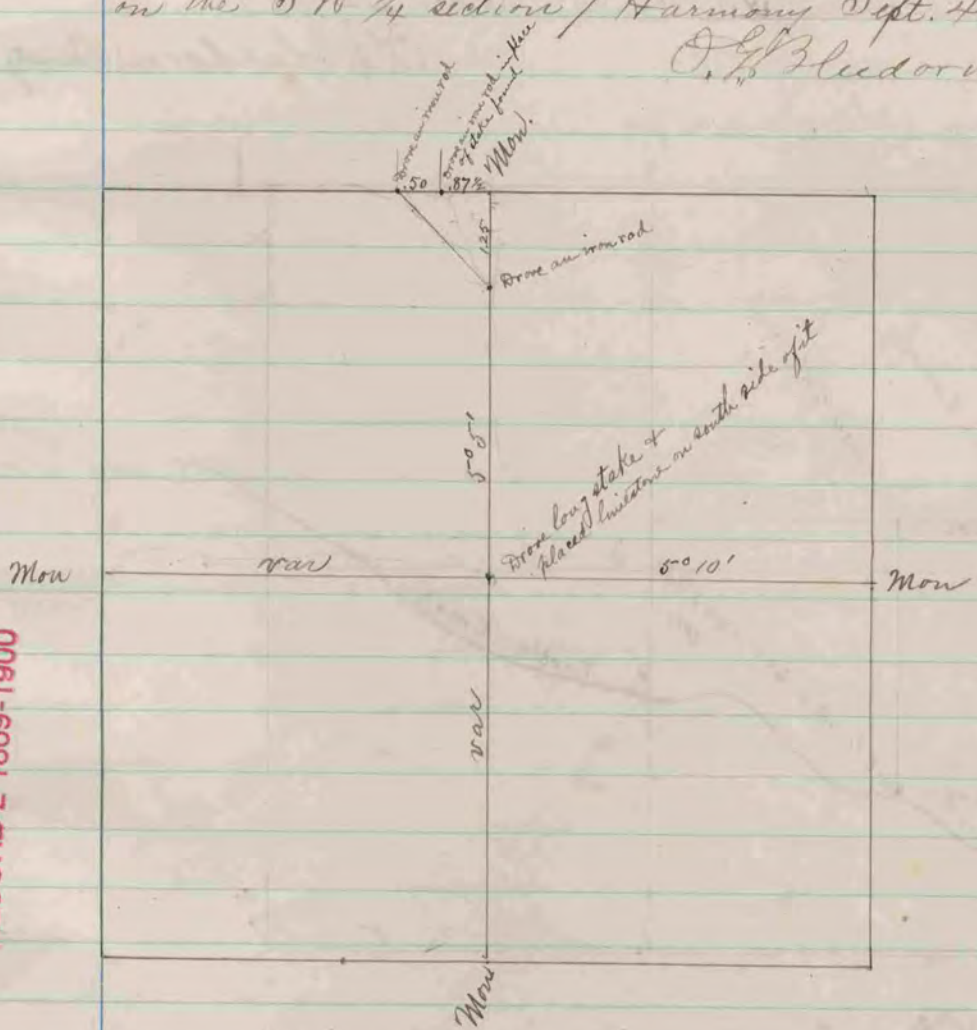


The above is a record & plat of a survey made by me
 on the SW 1/4 section 7 Harmony Sept. 4, 1891.
 O. G. Bledsoe, County Surveyor



The above is a record & plat of a survey made by me
 on section 34 Union Oct 21, 1891.
 O. G. Bledsoe
 County Surveyor

COUNTY SURVEYOR
 RECORD 2 1869-1900