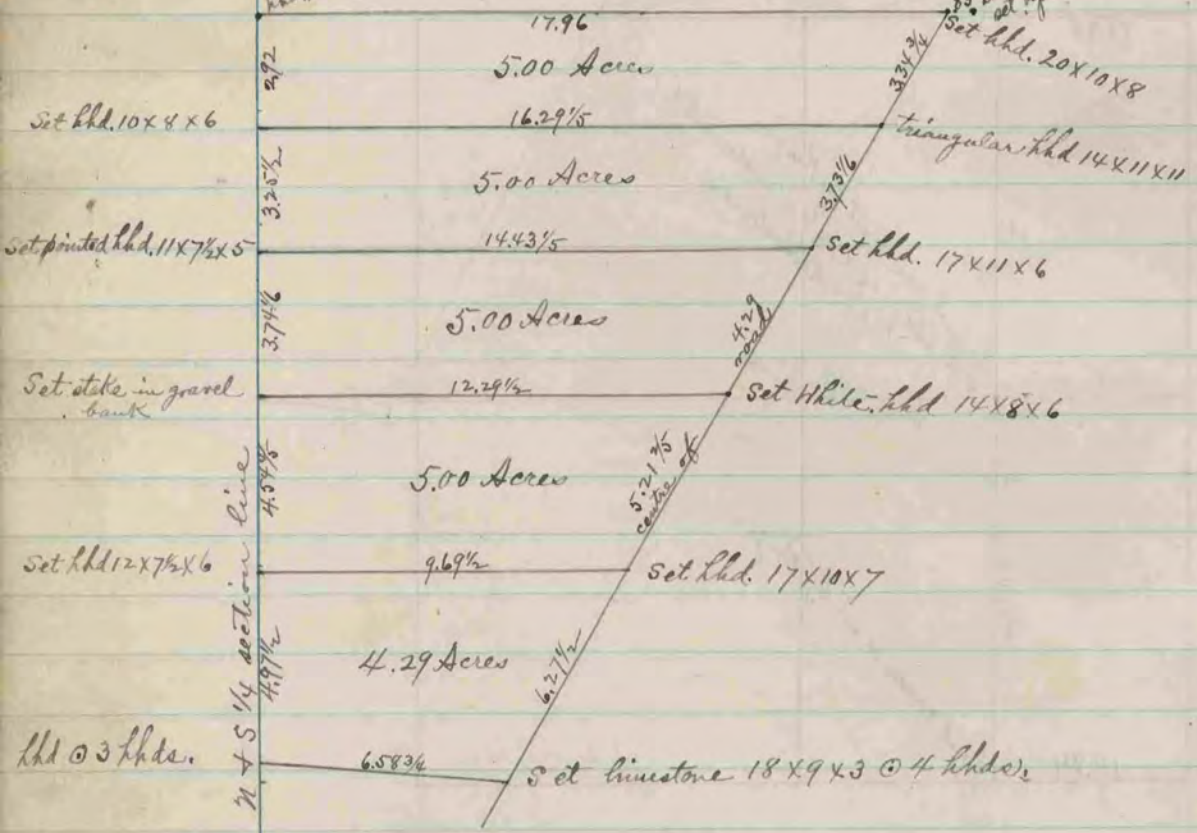


COUNTY SURVEYOR
RECORD 2 1869-1900

The above is a record & plat of a survey made by me on section 16 Milton June 21 & 23, 1892.
O. G. Bleedorn, County Surveyor

hhd. set by Reuger page 310

89. Dime county corner set by Reuger see page 313



The above is a record & plat of a survey made by me on the NW 1/4 of NW 1/4 sections 3 Milton Aug. 22 & 23, 1892.
O. G. Bleedorn
County Surveyor