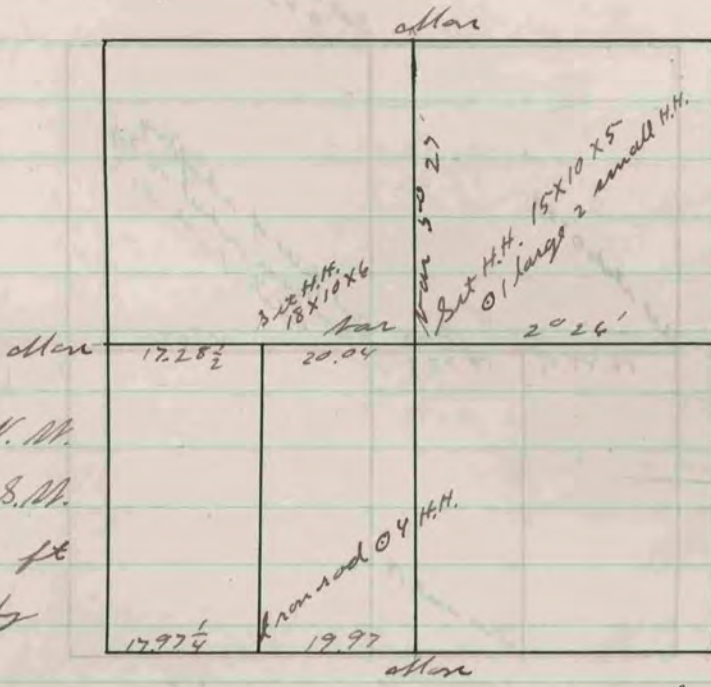


Set 26.
Milton

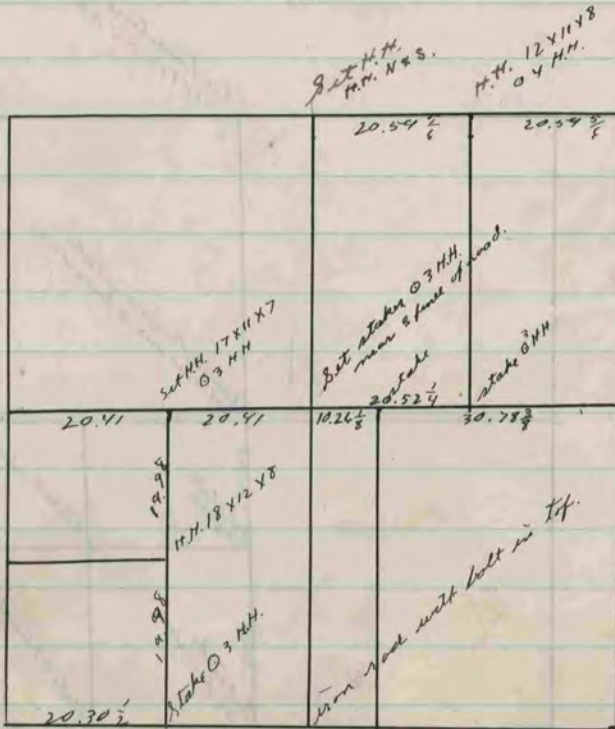
Apr. 24, 1895



Set 31
Milton

May. 2, 1895

Hardhead set on N.W.
corner of East 1/2 S.M.
1/4 sec 30 set 6 1/2 ft
too far north by
mistake.



Set 17
Lima

Set limestone 17x10x8
3 HH.

Found stake & stones