

PLAT AND RECORD

Of a Survey on Section 36 T 2 R 11 E. of the 4 P. M. in Plymouth Township
 Rock County, Wisconsin, made October the 29th 1852

I hereby certify that the following is a correct record of said survey as made by me.

COUNTY BUILDING
 IN CITY OF BELOIT

(Signed) Peter McVean
 R.H.B. County Surveyor.

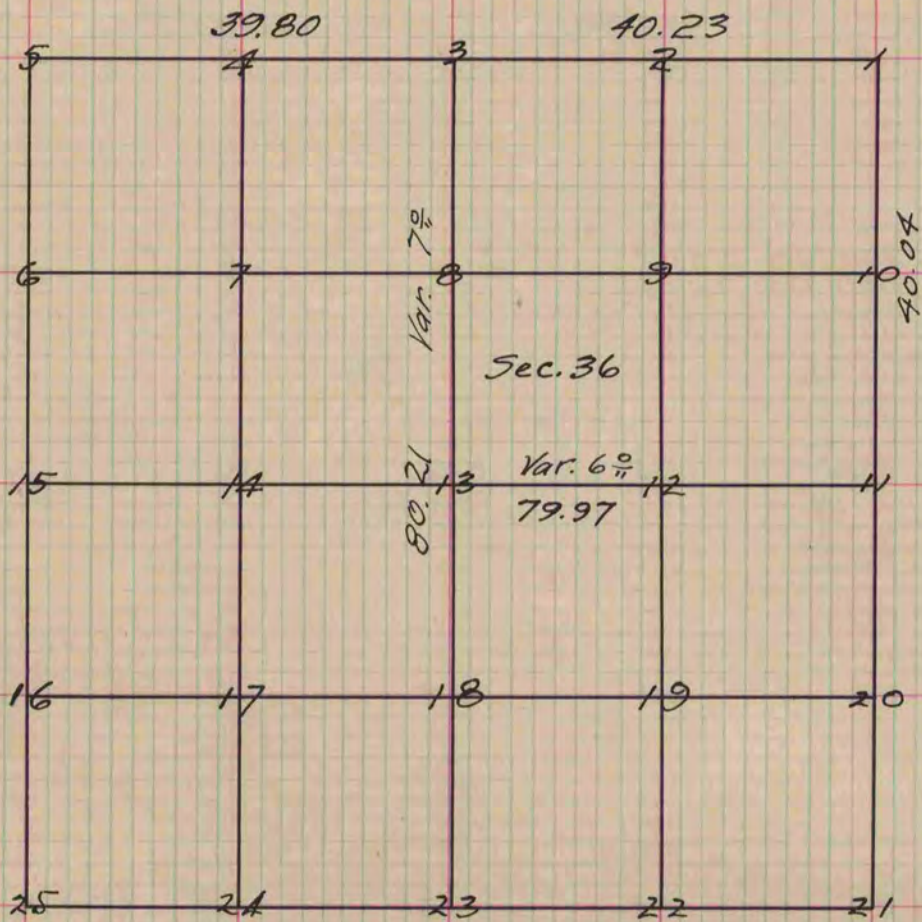


Figure 13 represents the center of the Section
 Fig. 13 W.O. 10 S. 85 E. 29 1/2 Also W.O. 14 N. 18 1/2 E. 30
 " 12 B.I.O. 14 S. 48 W. 22 Also B.I.O. 12 N. 72 W. 20
 " 9 W.O. 14 N. 15 E. 3 Also W.O. 20 N. 74 1/2 W. 35
 " 2 W.O. 12 N. 38 W. 31 Also W.O. 24 S. 43 E. 91
 " 14 Br.O. 10 N. 61 E. 1.11 Also W.O. 12 N. 45 W. 1.09
 " 4 Elm 24 S. 11 1/2 W. 58 Also B.I.O. 10 S. 6 W. 61
 " 7 Post in Grubs
 " 8 W.O. 8 S. 20 1/2 E. 91. Also cherry 10 S. 30 1/2 W. 76
 " 10 W.O. 30 S. 35 E. 54 Also W.O. 25 N. 36 W. 61

Copied from page 15 Vol. 1. County Surveyors Record