

PLAT AND RECORD

Of a Survey on Section 14 T 1 R 13 E. of the 4 P. M. in Turtle Township
Rock County, Wisconsin, made June the 1st 1854

I hereby certify that the following is a correct record of said survey as made by me.

COUNTY BUILDING
IN CITY OF BELOIT

(Signed) Peter McVean
R.H.B. County Surveyor.

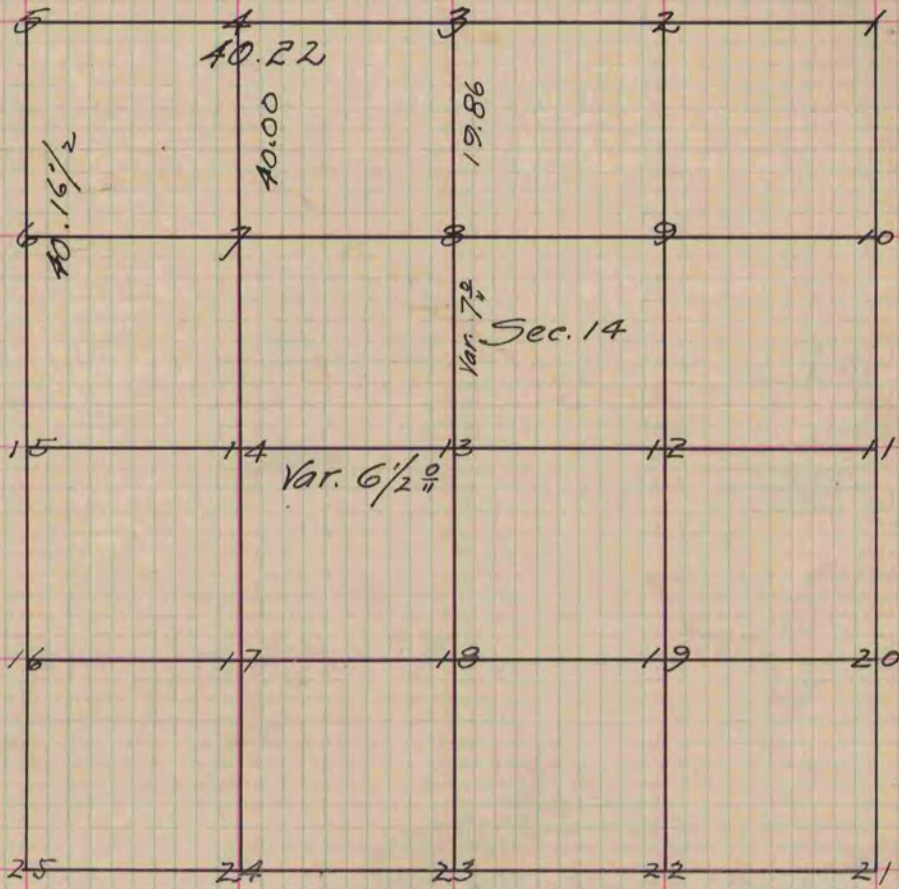


Figure 4 represents the N.E. Corner of the N.W. Quarter of the N.W. Gr. Section

Fig. 4 W.O. 28 N. 74 1/2 W. 62 Also W.O. 85. 8 1/2 E. 46

Copied from Page 26 Vol. 1. Original County Surveyors Record