

PLAT AND RECORD

Of a Survey on Section 27 T 1 R 10 E. of the 4 P. M. in Aron Township
 Rock County, Wisconsin, made June the 4th 1854

I hereby certify that the following is a correct record of said survey as made by me.

COUNTY BUILDING
 IN CITY OF BELLOIT

(Signed) Peter McVean
 R.H.B. County Surveyor.

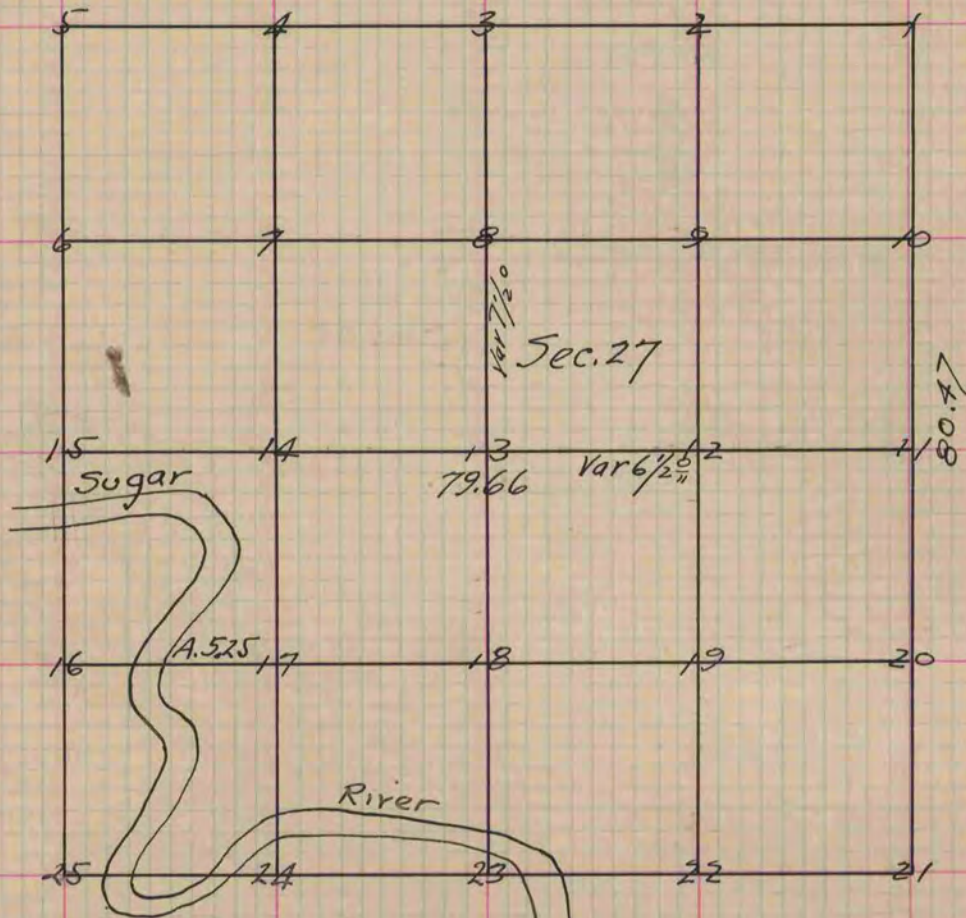


Figure 13 represents the centre of the Section
 Fig. 13 Burried a lime stone 24 inches long, 12 wide and 5 thick even with the surface of the ground
 Fig. 14 Burried a limestone 15 inches long 6 wide and 5 thick even with the surface.
 " 15 Burried a round hardhead stone 15 inches in diameter in the ground even with the surface
 " 18 Burried a lime stone 18 inches long 15 wide and 5 thick the top 4 inches above the surface
 " 17 Burried a lime stone 20 inches long 12 wide and 5 thick, 4 inches the top above the surface
 " 20 Burried a hardhead stone 15 inches long 12 inches in diameter even with the surface of the ground
 " 11 Burried a limestone 24 inches long 18 wide 6 thick the top 4 inches above the ground surface.
 Letter A represents a post on the line of forties and on the East Bank of
 Sugar River, the bearing trees as follows.
 Letter A. Elm 12 S. 39 W. 34 - Also Elm 10 N. 16 E. 68 and is West of Fig 5.25

Copied from Page 27 Vol. 1. Original County Surveyors Record