

PLAT AND RECORD

Of a Survey on Section 9 T 3 R 10 E. of the 4 P. M. in Magnolia Township

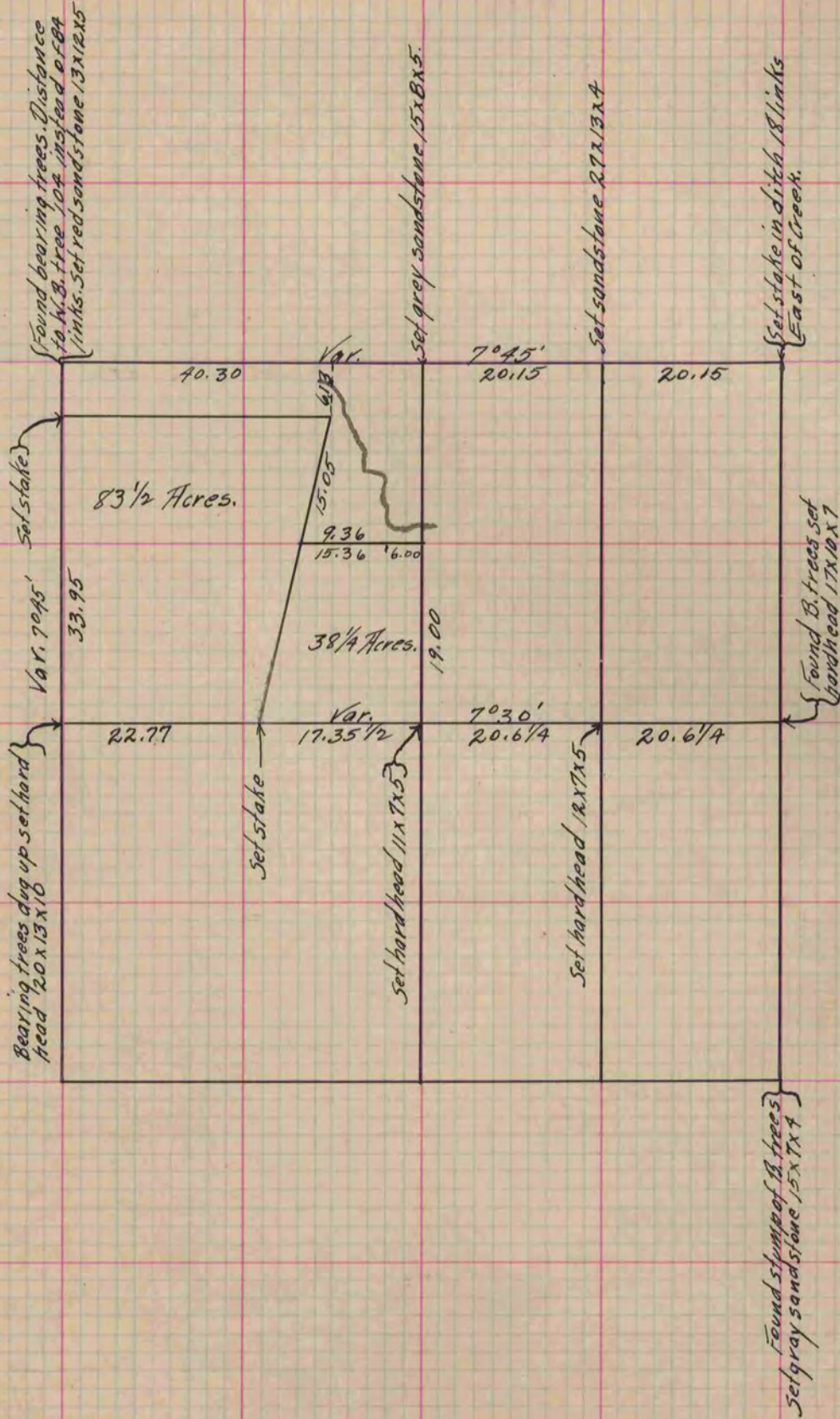
Rock County, Wisconsin, made June the 29th & 25th 1863

I hereby certify that the following is a correct record of said survey as made by me.

COUNTY BUILDING
IN CITY OF BELOIT

(Signed) S. D. Locke
S. D. Locke

County Surveyor.



Copied from upper part of Page 192 Vol. one County Surveyors Record