

PLAT AND RECORD

Of a Survey on Sections 26+35 T 2 R 12 E. of the 4 P. M. in Rock Township

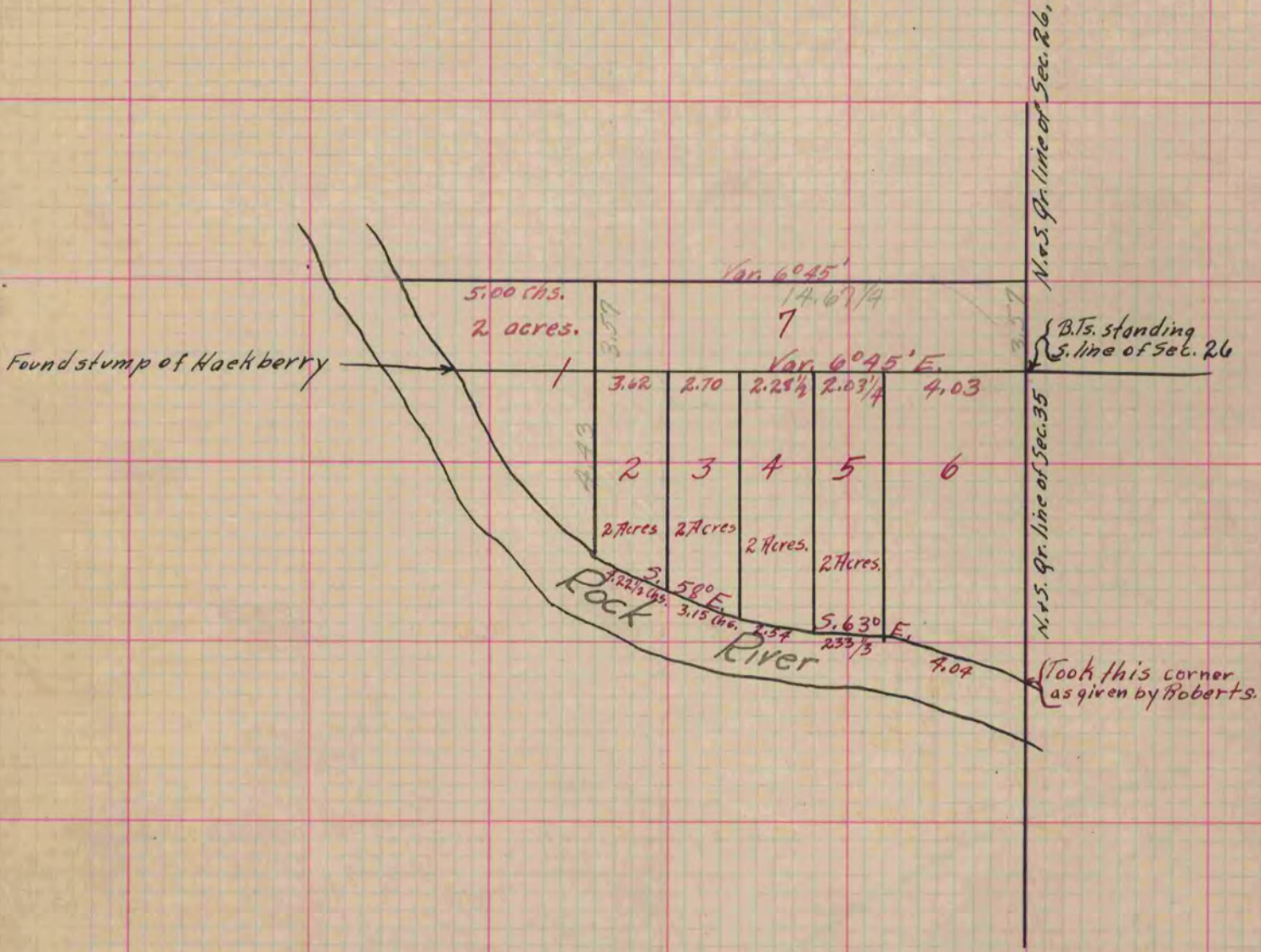
Rock County, Wisconsin, made January the 18 + 20 19

I hereby certify that the following is a correct record of said survey as made by me.

COUNTY BUILDING
IN CITY OF BELOIT

(Signed) J. D. Locke.
JMLB

County Surveyor.



Copied from lower 1/2 of Page 199 Vol. 1. Original County Surveyor's Record.