

PLAT AND RECORD

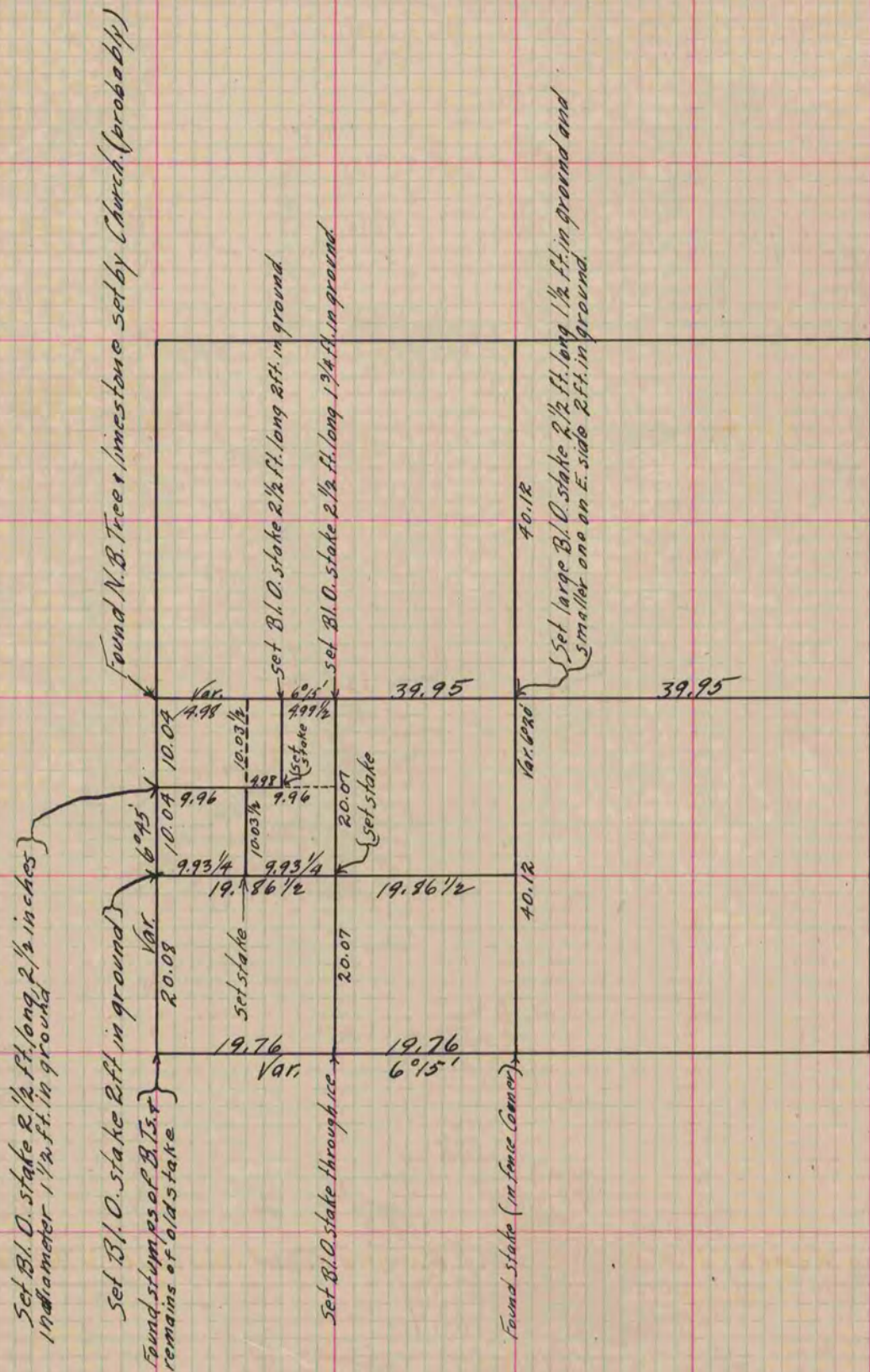
Of a Survey on Section 10 T 2 R 11 E. of the 4 P. M. in Plymouth Township
Rock County, Wisconsin, made January the 28th 1864

I hereby certify that the following is a correct record of said survey as made by me.

COUNTY BUILDING
IN CITY OF БЕЛОIT

(Signed) S. D. Locke.
S. D. Locke

County Surveyor.



Copied from Upper 1/2 of Page 200 Vol. 1. Original County Surveyor's Record.