

# PLAT AND RECORD

Of a Survey on Section 8 T 1 R 12 E. of the 4 P. M. in Beloit Township

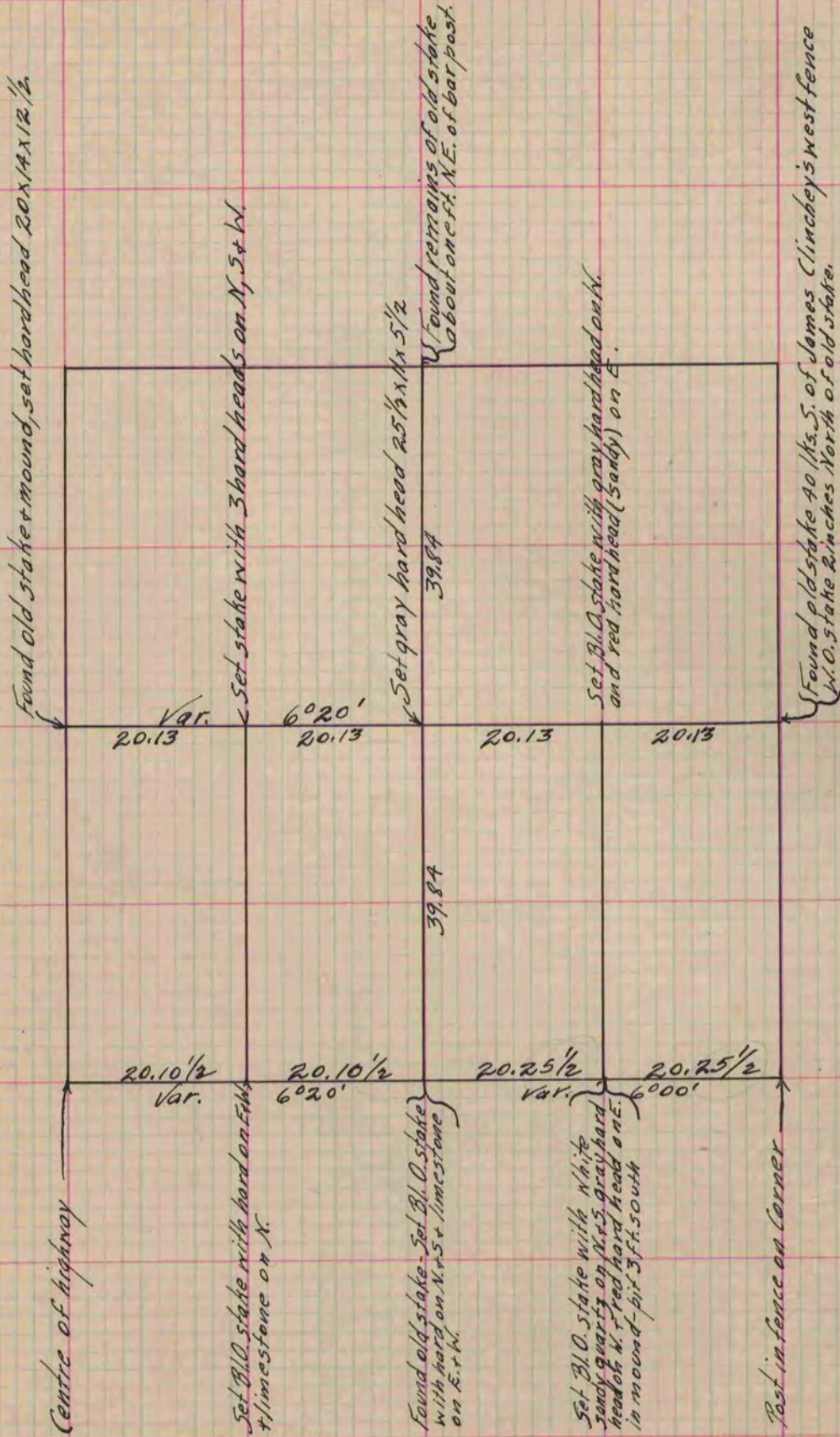
Rock County, Wisconsin, made May the 27<sup>th</sup> 1864

I hereby certify that the following is a correct record of said survey as made by me.

COUNTY BUILDING  
IN CITY OF BELOIT

(Signed) S.P. Locke  
S.P.L.

County Surveyor.



Copied from Page 204 Vol. 1. Original County Surveyor's Record.