

# PLAT AND RECORD

Of a Survey on Section 4 T 3 R 14 E. of the 4 P. M. in Johnstown Township

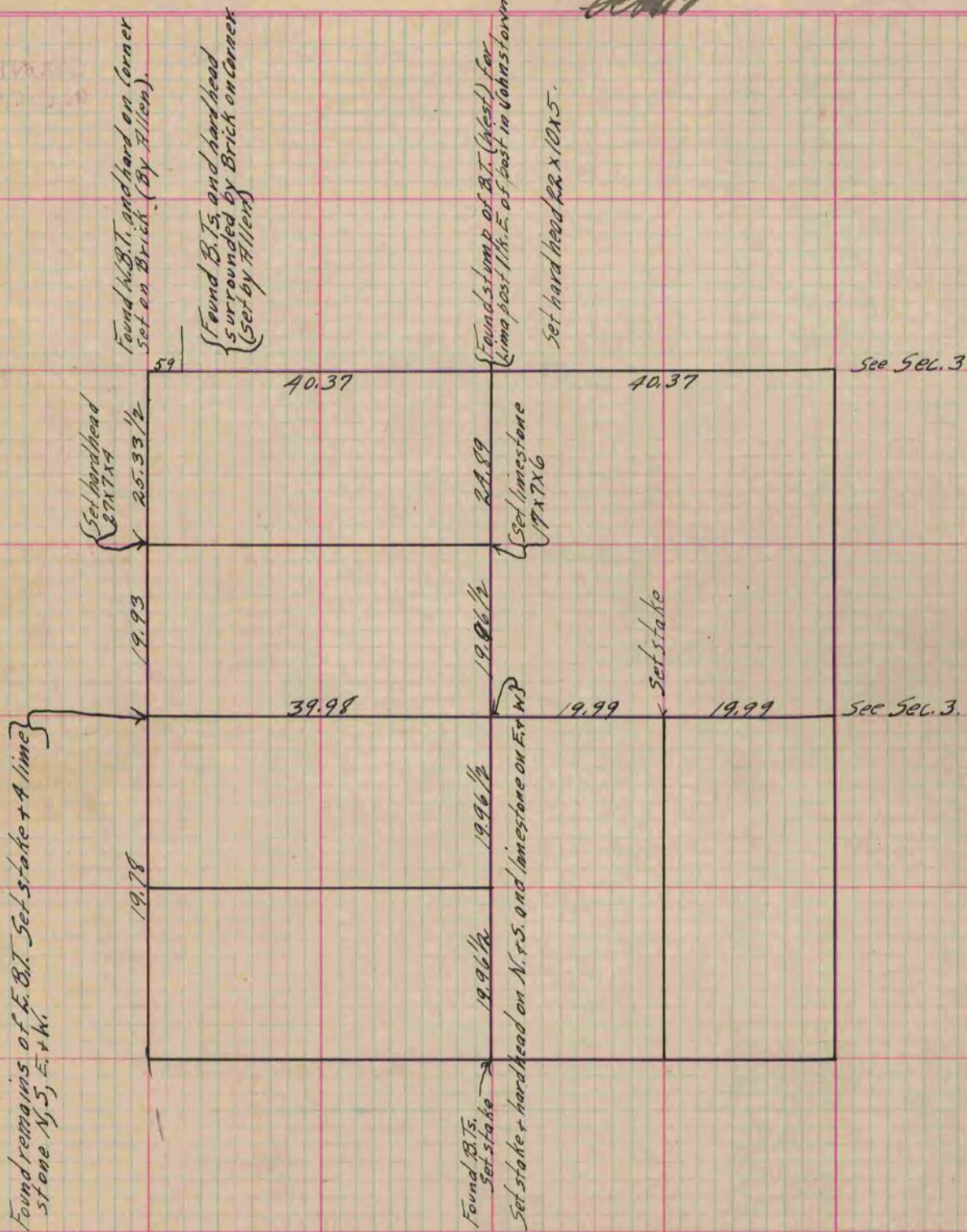
Rock County, Wisconsin, made May 31<sup>st</sup> & June the 1<sup>st</sup> 1864

I hereby certify that the following is a correct record of said survey as made by me.

COUNTY BUILDING  
IN CITY OF BELOIT

(Signed) S. D. Locke.

County Surveyor.



Copied from Lower Part of Page 205 Vol. 1. Original County Surveyor's Record.