

# PLAT AND RECORD

Of a Survey on Section 21 T 7 R 11 E. of the 4 P. M. in Porter Township  
Rock County, Wisconsin, made June the 7<sup>th</sup> 1864

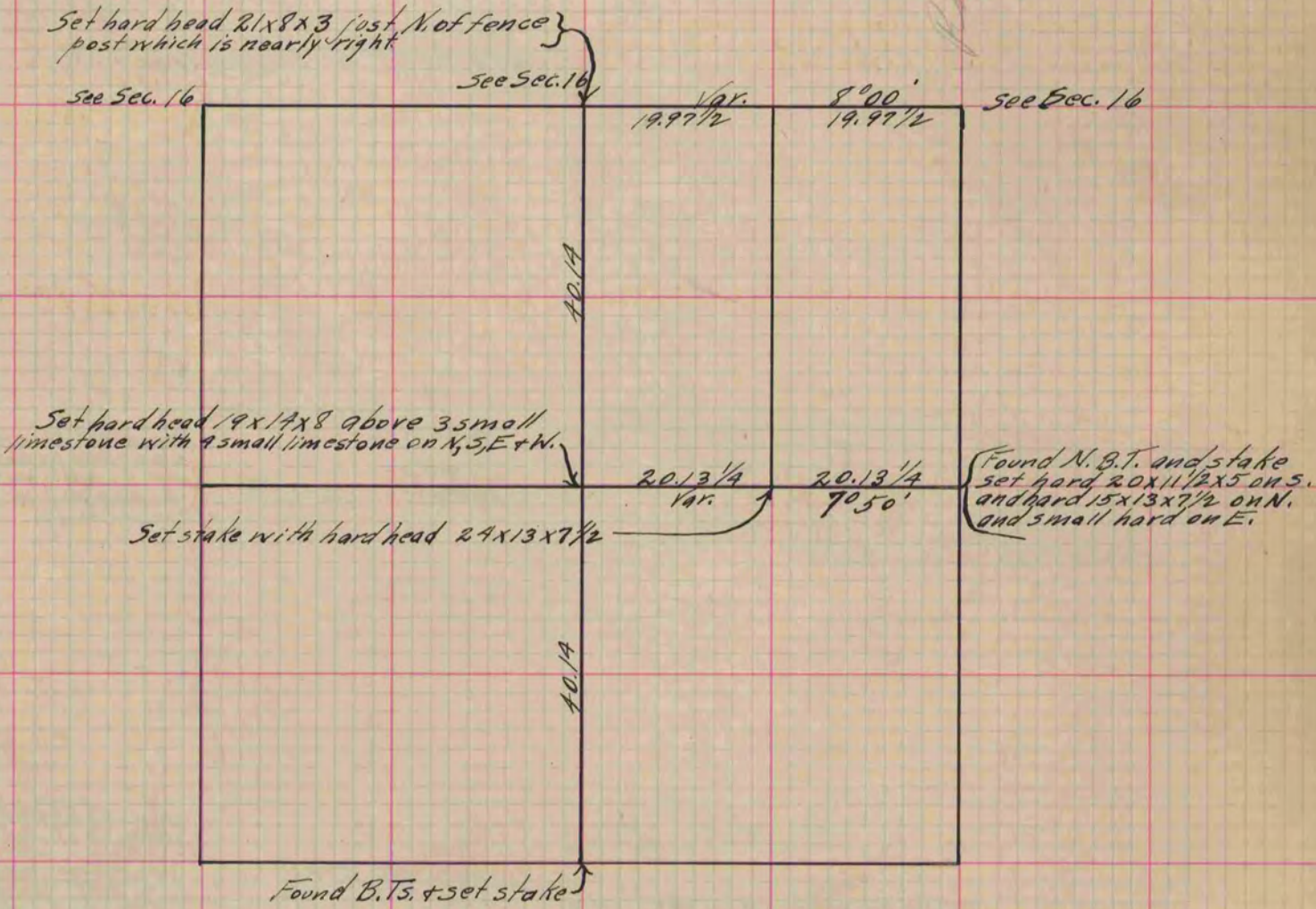
I hereby certify that the following is a correct record of said survey as made by me.

COUNTY BUILDING  
IN CITY OF BELOIT

(Signed) S. D. Locke.  
S. D. Locke

County Surveyor.

COUNTY BUILDING  
IN CITY OF BELOIT



Copied from upper 1/2 of Page 207 Vol. 1. Original County Surveyor's Record.