

# PLAT AND RECORD

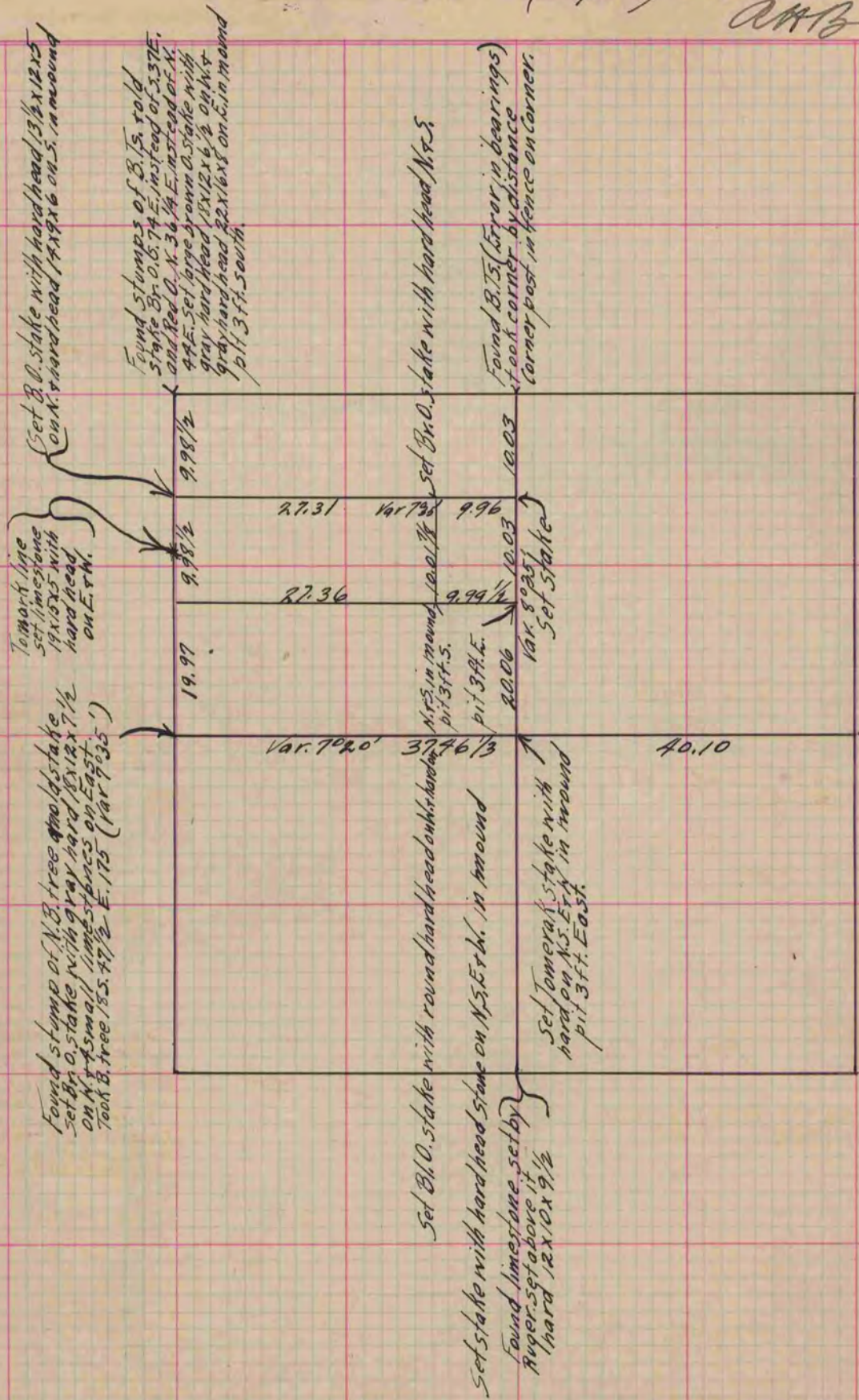
Of a Survey on Section 7 T 3 R 12 E. of the 4 P. M. in Janesville Township

Rock County, Wisconsin, made June the 23rd 1867

I hereby certify that the following is a correct record of said survey as made by me.

(Signed) S. D. Locke  
S.D.L.

County Surveyor.



COUNTY BUILDING  
IN CITY OF БЕЛОIT

*Copied from Upper 1/2 of Page 208 Vol. 1. Original County Surveyor's Record.*