

# PLAT AND RECORD

Of a Survey on Section / T 3 R 11 E. of the 4 P. M. in Centre Township

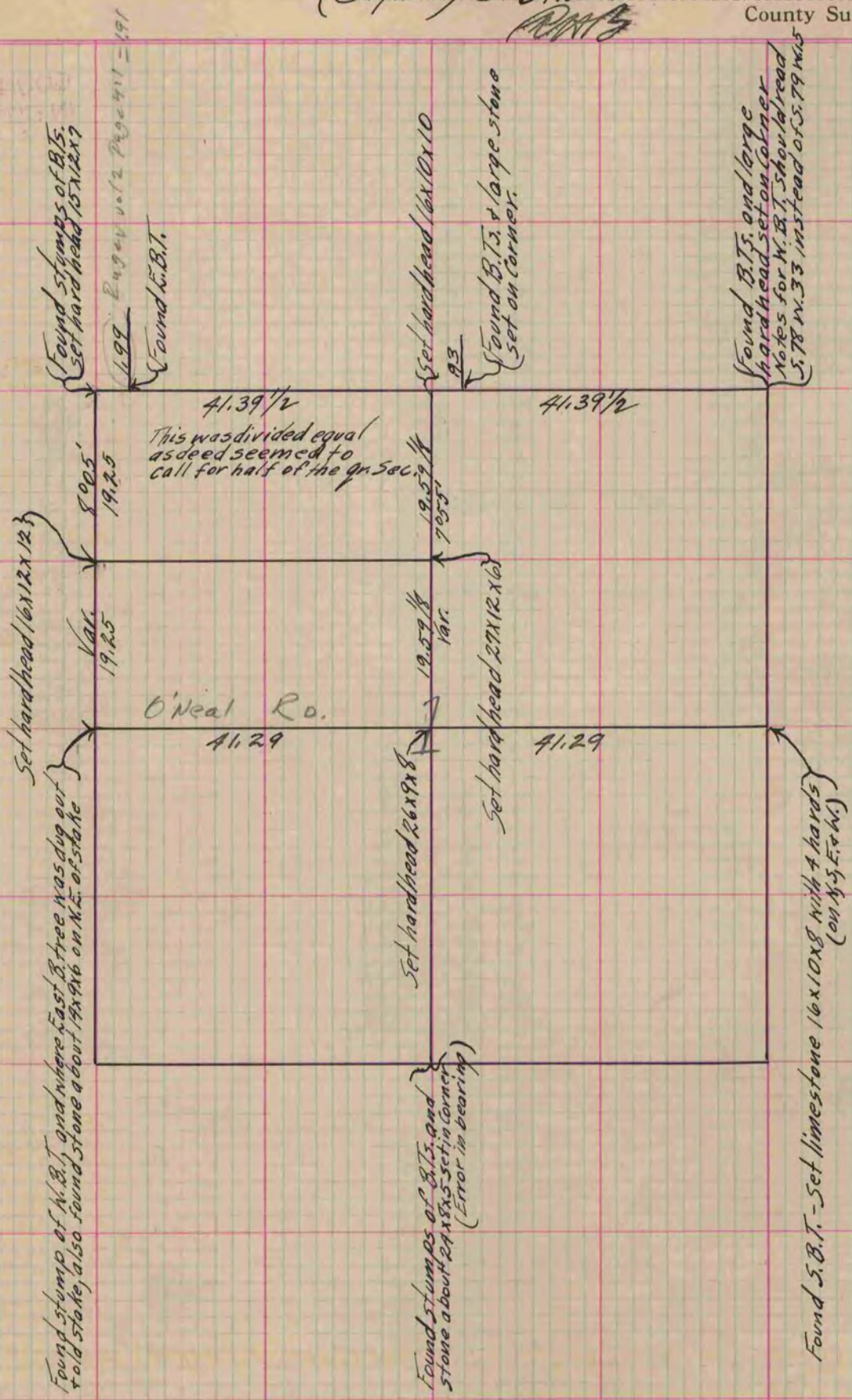
Rock County, Wisconsin, made June the 24+25th 1864

I hereby certify that the following is a correct record of said survey as made by me.

(Signed) S. D. Locke.

County Surveyor.

COUNTY BUILDING  
IN CITY OF BELOIT



Copied from Lower 1/2 of Page 208 Vol. 1. Original County Surveyor's Record.