

PLAT AND RECORD

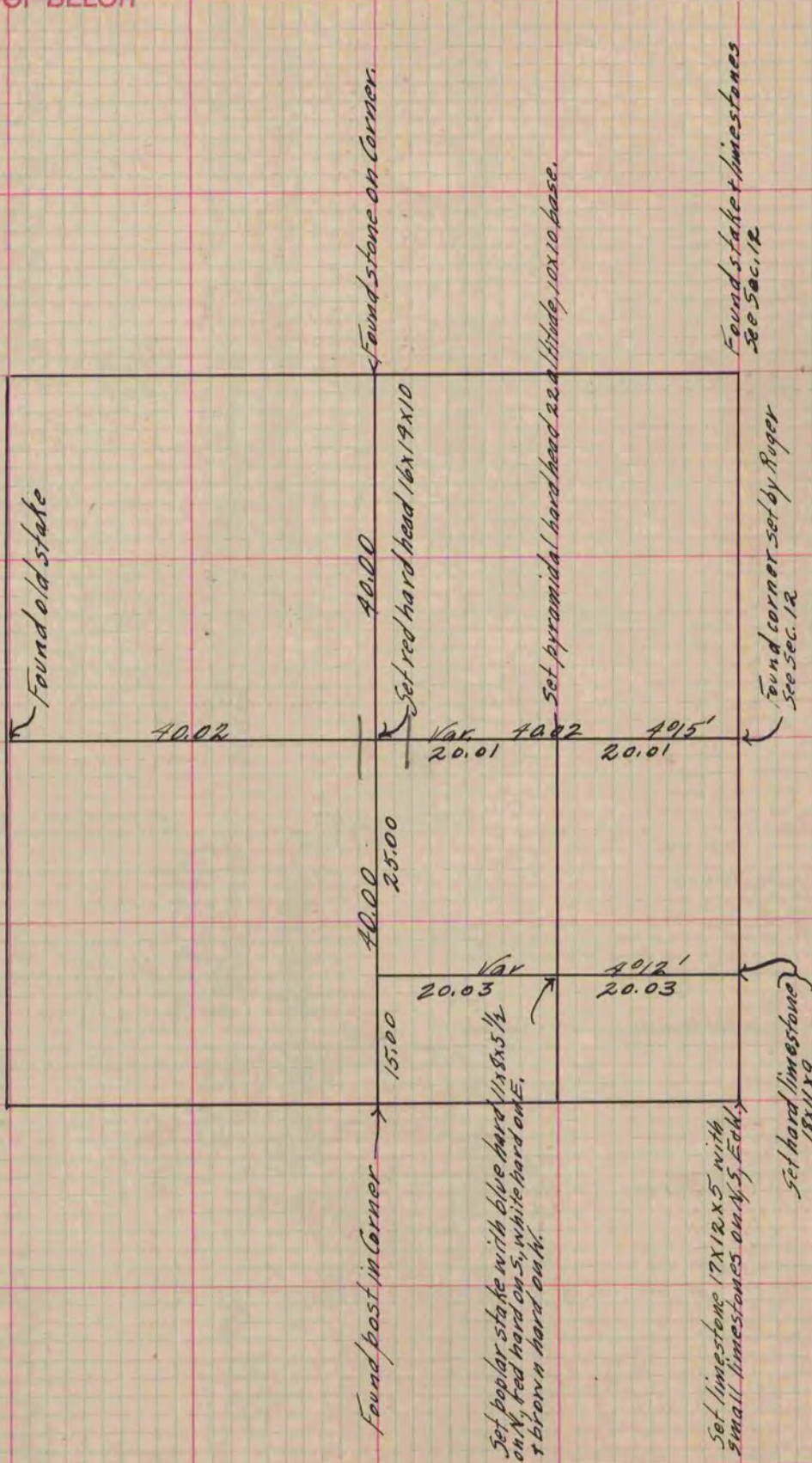
Of a Survey on Section 11 T 2 R 13 E. of the 4 P. M. in La Prairie Township
Rock County, Wisconsin, made October the 3 1864

I hereby certify that the following is a correct record of said survey as made by me.

(Signed) S. D. Locke
SMB

County Surveyor.

COUNTY BUILDING
IN CITY OF BELOIT



Copied from Upper 1/2 of Page 201 Vol. 1 Original County Surveyors Record.