

PLAT AND RECORD

Of a Survey on Section 20 T. 1 R. 10 E. of the 4 P. M. in Avon Township

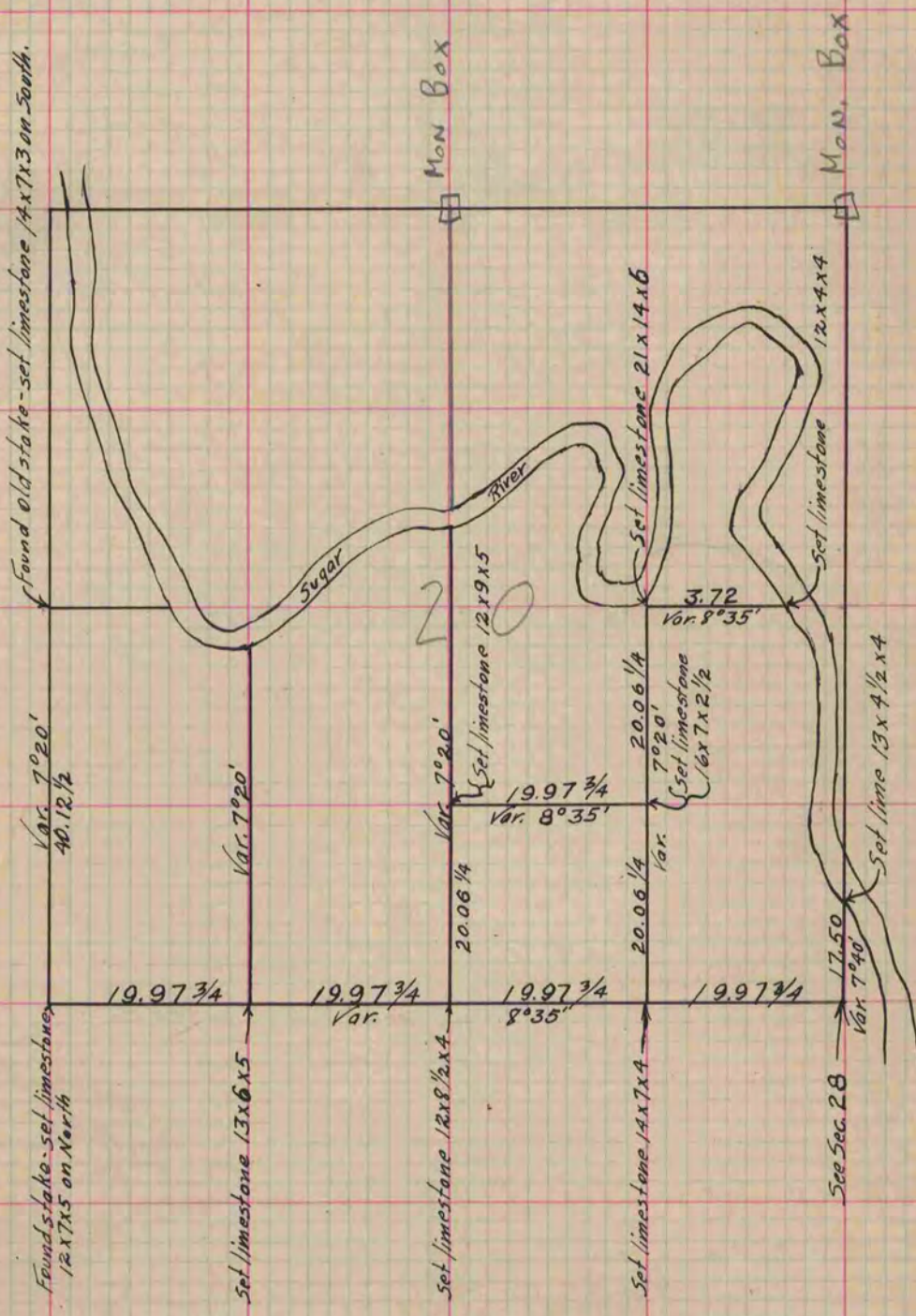
Rock County, Wisconsin, made Dec. 7th the 1864

I hereby certify that the following is a correct record of said survey as made by me.

COUNTY BUILDING
IN CITY OF BELOIT

(Signed) S. D. Locke
S. D. Locke

County Surveyor.



N. B. Run the East line the same course as the W. line of Sec. 28, that being probably the way it was run by the Government Surveyors. Run the interior N. + S. & E. + W. lines the same course respectively as the West + South lines; the only known lines in the Fractional Sec. - S. D. Locke

Copied from Lower 1/2 of Page 213 Vol. 1. Original County Surveyor's Record.