

# PLAT AND RECORD

227

Of a Survey on Section 33 T 1 R 11 E. of the 4 P. M. in Newark Township

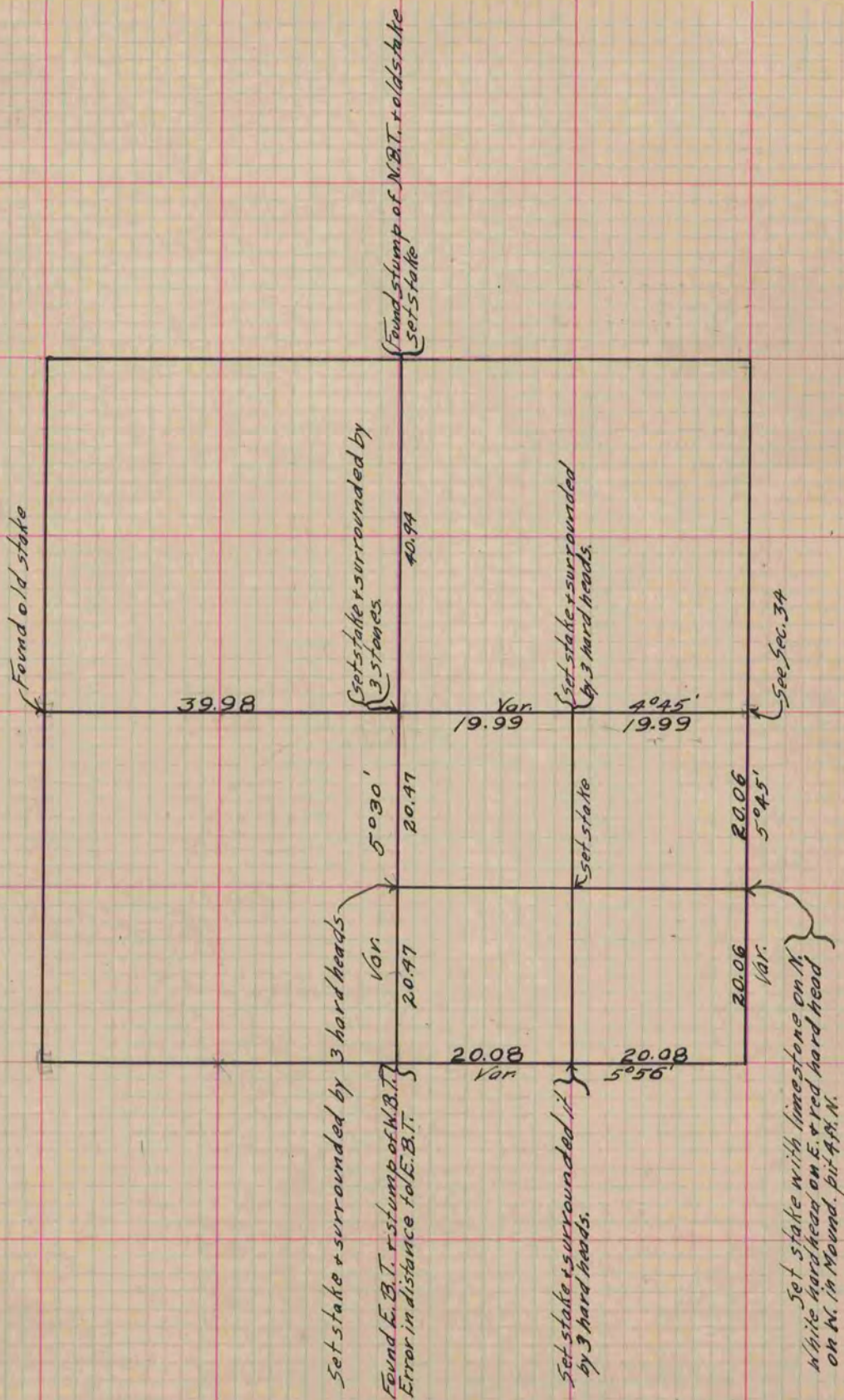
Rock County, Wisconsin, made April the 5+6 1865

I hereby certify that the following is a correct record of said survey as made by me.

COUNTY BUILDING  
IN CITY OF BELOIT

(Signed) S. D. Locke  
S. D. Locke

County Surveyor.



Copied from Lower 1/2 of Page 217 Vol. 1. Original County Surveyor's Record.