

PLAT AND RECORD

Of a Survey on Section 27 T 4 R 10 E. of the 4 P. M. in Union Township

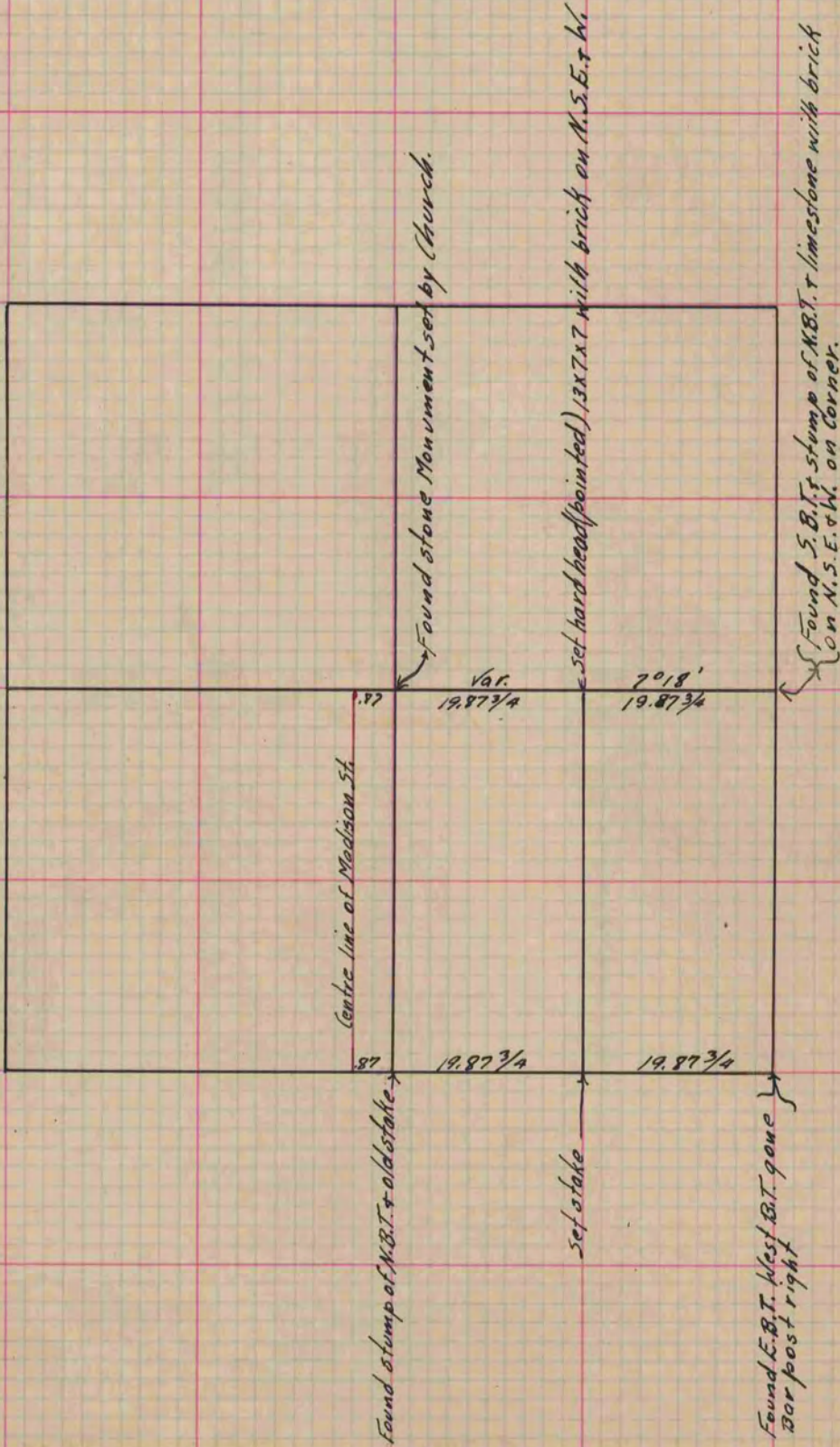
Rock County, Wisconsin, made May the 2nd 1865

I hereby certify that the following is a correct record of said survey as made by me.

COUNTY BUILDING
IN CITY OF BELOIT

(Signed) J. D. Locke.
JDL

County Surveyor.



Copied from Page 216 Vol. 1. Original County Surveyor's Record.