

# PLAT AND RECORD

Of a Survey on Section 26 T 4 R 10 E. of the 4 P. M. in Union Township

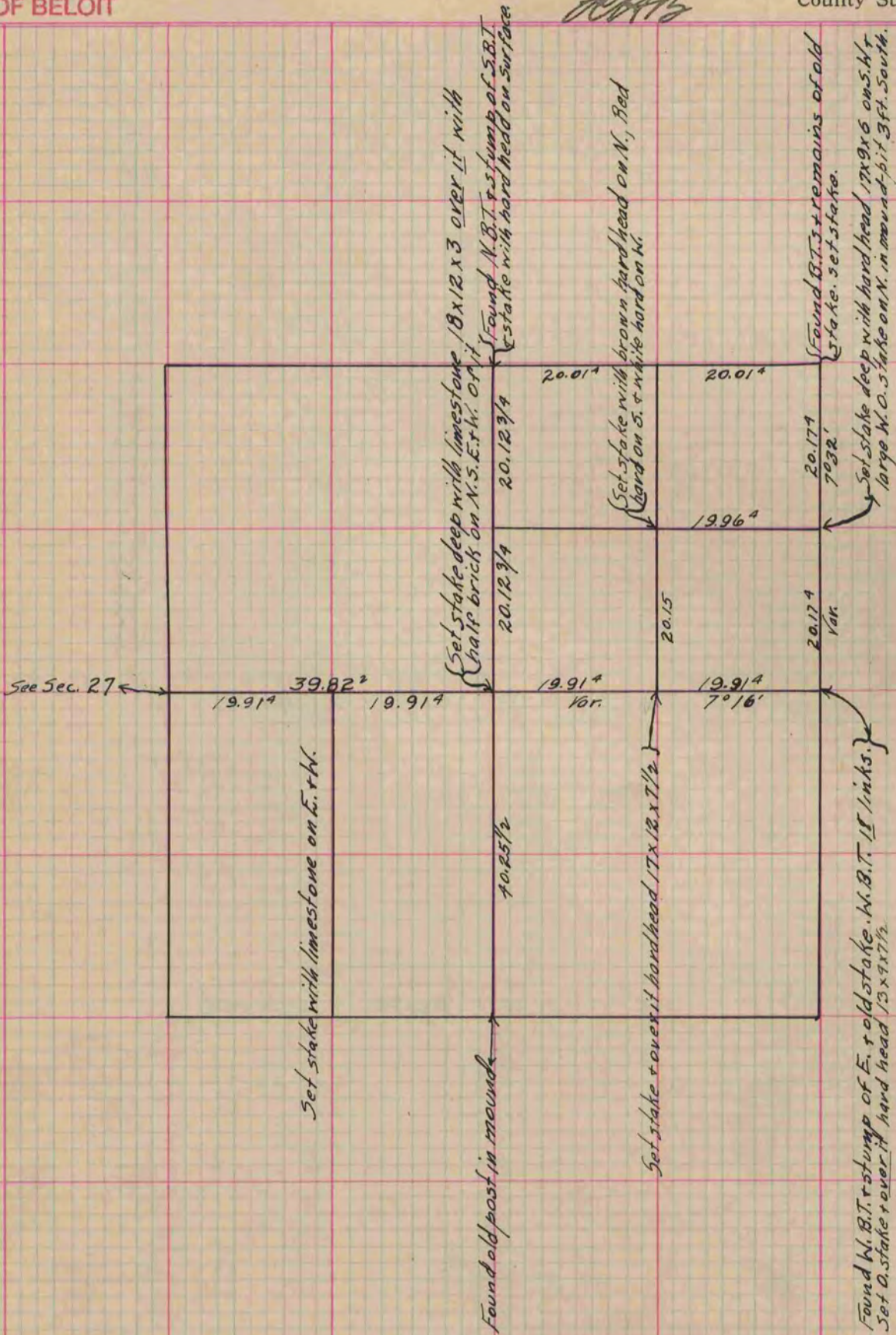
Rock County, Wisconsin, made May the 4<sup>th</sup> 1865

I hereby certify that the following is a correct record of said survey as made by me.

COUNTY BUILDING  
IN CITY OF BELOIT

(Signed) S. D. Locke

County Surveyor.



Copied from Page 217 Vol. 1. Original County Surveyor's Record.