

PLAT AND RECORD

235

Of a Survey on Section 6 T 1 R 13 E. of the 4 P. M. in Turtle Township

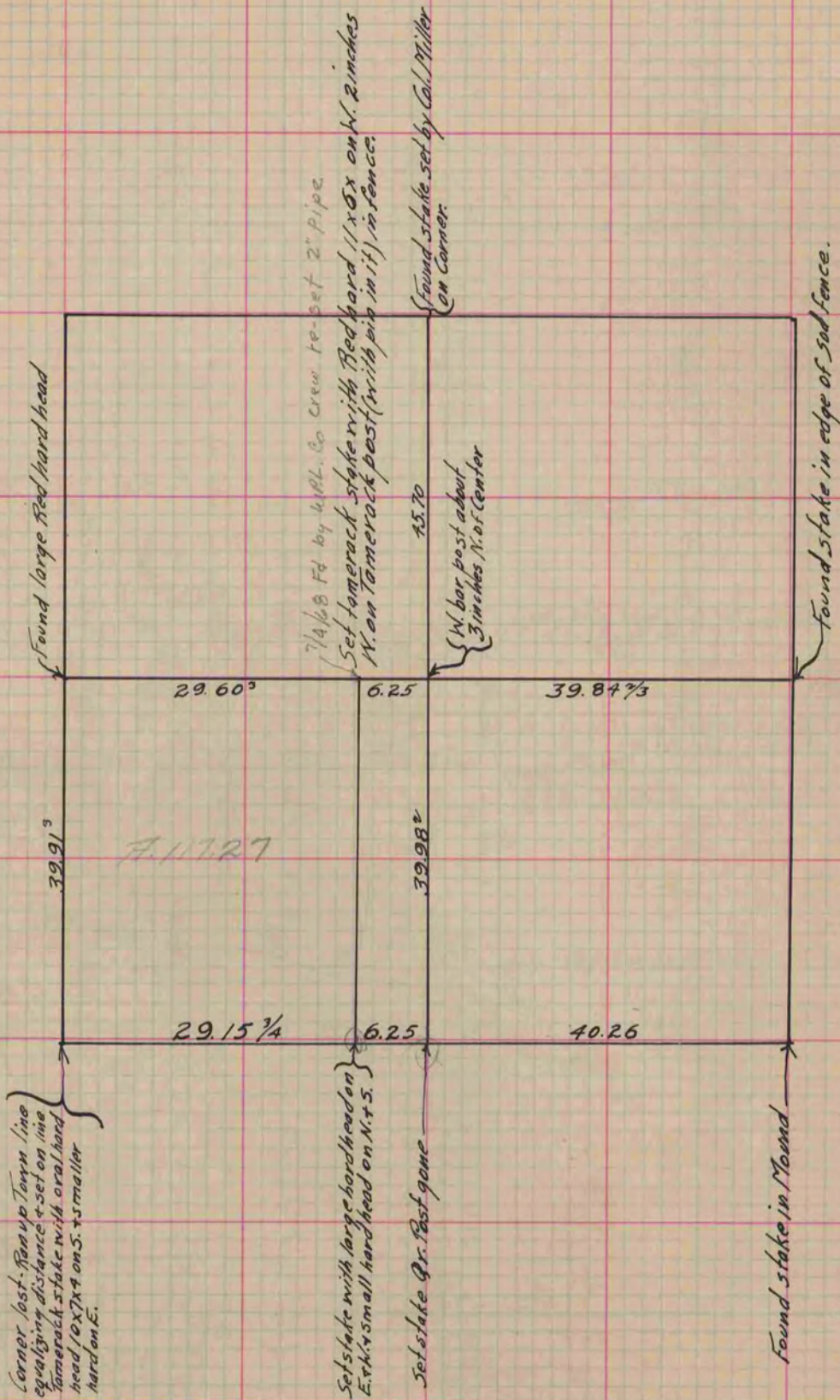
Rock County, Wisconsin, made May the 15 1865

I hereby certify that the following is a correct record of said survey as made by me.

COUNTY BUILDING
IN CITY OF BELOIT

(Signed) S. D. Locke.
S. D. Locke

County Surveyor.



Copied from Page 218 Vol. 1. Original County Surveyor's Record.