

PLAT AND RECORD

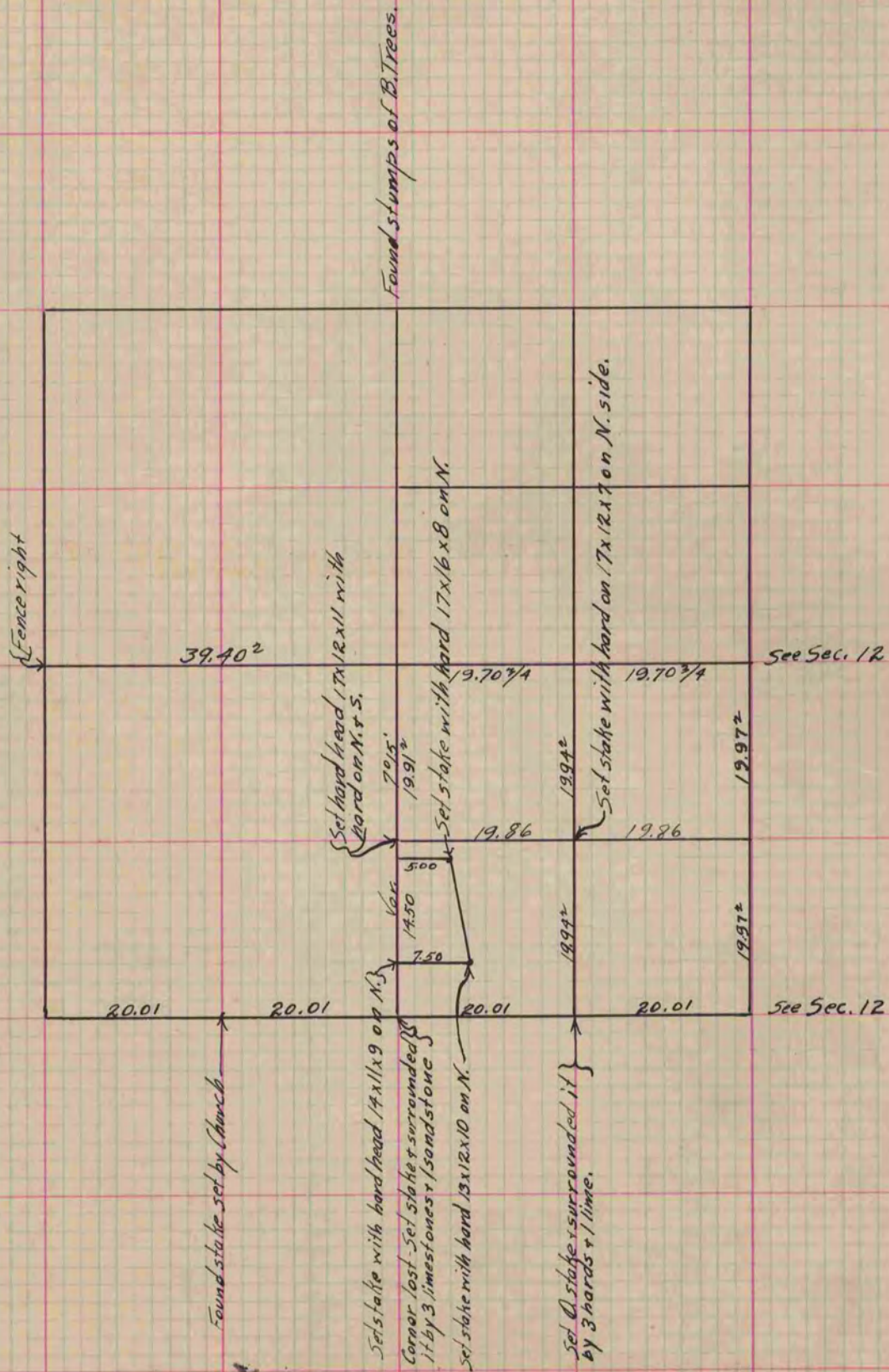
Of a Survey on Section // T 2 R // E. of the 4 P. M. in *Plymouth* Township
Rock County, Wisconsin, made *July* the *6th & 7th* 1865

I hereby certify that the following is a correct record of said survey as made by me.

COUNTY BUILDING
IN CITY OF БЕЛОIT

(Signed) *S. D. Locke*

County Surveyor.



Copied from Page 221 Vol. 1. Original County Surveyor's Record.