

# PLAT AND RECORD

Of a Survey on Sections 31 & 32 T 4 R 12 E. of the 4 P. M. in Fulton Township

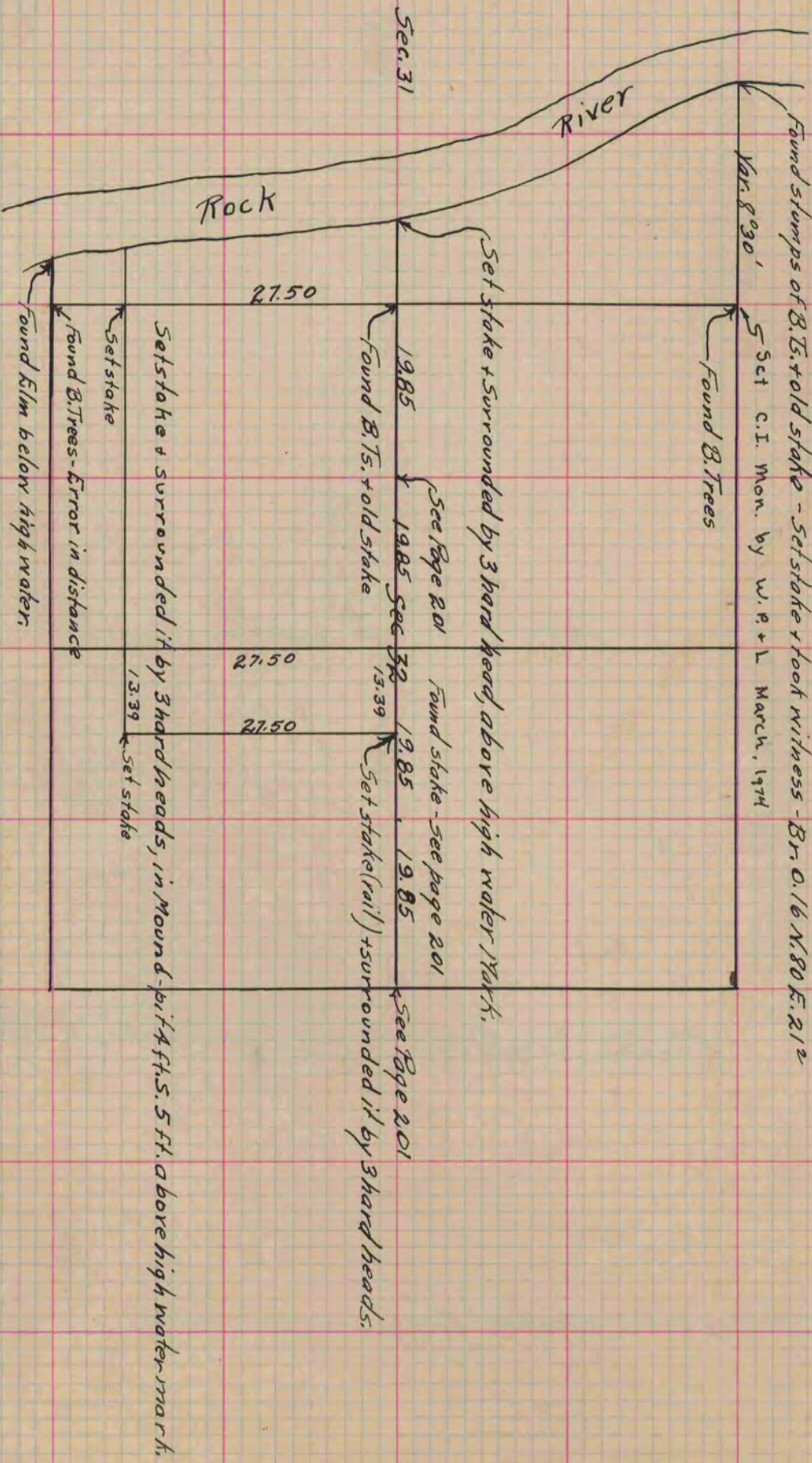
Rock County, Wisconsin, made July the 20<sup>th</sup> & 21<sup>st</sup> 1865

I hereby certify that the following is a correct record of said survey as made by me.

COUNTY BUILDING  
IN CITY OF BELOIT

(Signed) S.D. Locke.  
RMB

County Surveyor.



SET C.I. Mon. At 5 1/4 OF 32-4-12  
 SET C.I. Mon. At N 1/4 OF 3-3-12  
 COR.S. SET BY W.R. + L. March 1914

Copied from Page 223 Vol. 1. Original County Surveyor's Record.