

# PLAT AND RECORD

Of a Survey on Sections 9+16 T 3 R 12 E. of the 4 P. M. in Sanesville Township

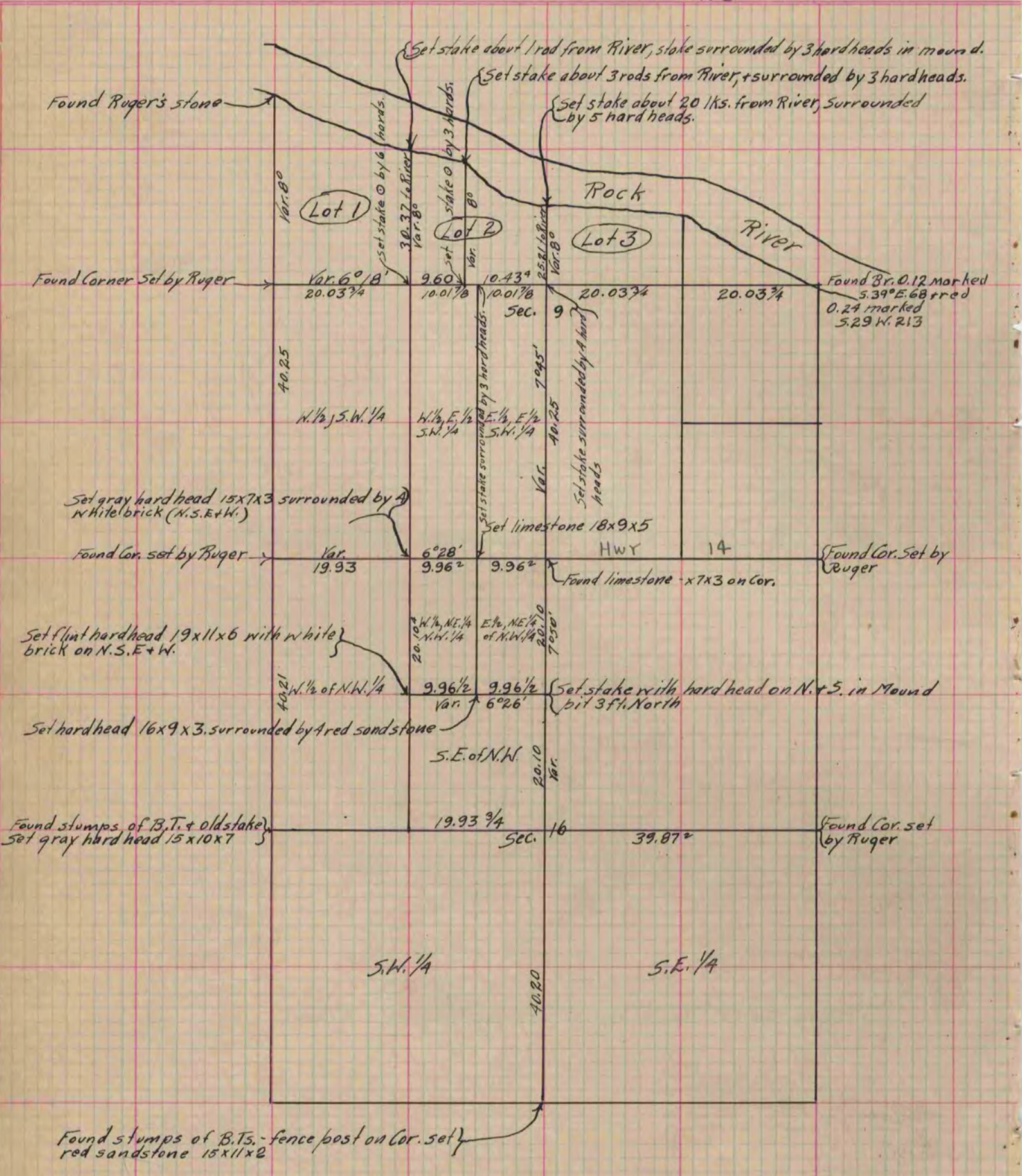
Rock County, Wisconsin, made April the 25<sup>th</sup> & 26<sup>th</sup> 1866

I hereby certify that the following is a correct record of said survey as made by me.

COUNTY BUILDING  
IN CITY OF БЕЛОIT

(Signed) S. D. Locke  
S.D.L.

County Surveyor.



Copied from Page 227 Vol. 1. Original County Surveyor's Record.