

PLAT AND RECORD

251

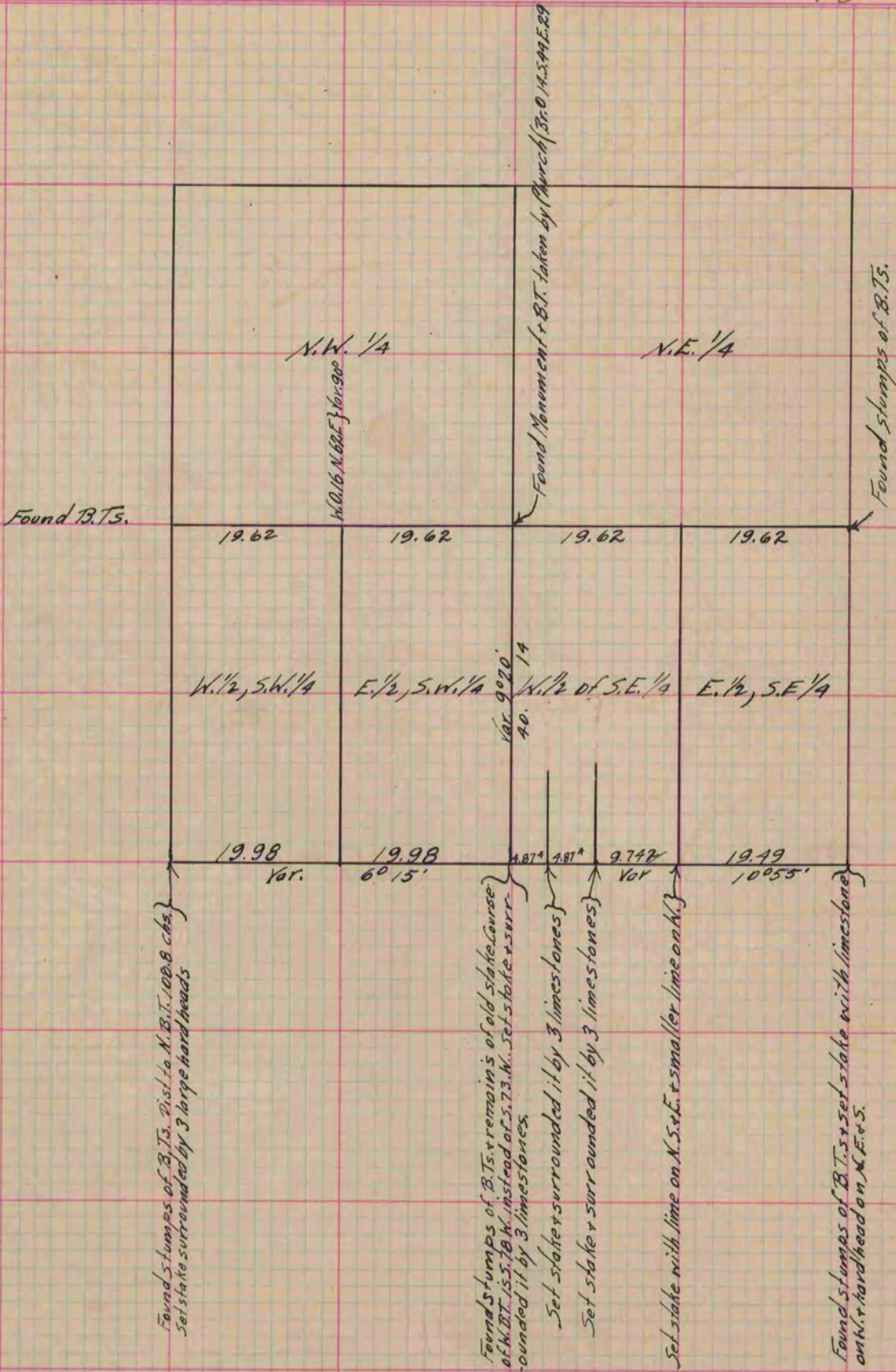
Of a Survey on Section 15 T 2 R 10 E. of the 4 P. M. in Spring Valley Township
 Rock County, Wisconsin, made May the 14th 1866

I hereby certify that the following is a correct record of said survey as made by me.

COUNTY BUILDING
 IN CITY OF BELOIT

(Signed) S. D. Locke
S. D. Locke

County Surveyor.



Copied from Page 228 Vol. 1. Original County Surveyor's Record.