

# PLAT AND RECORD

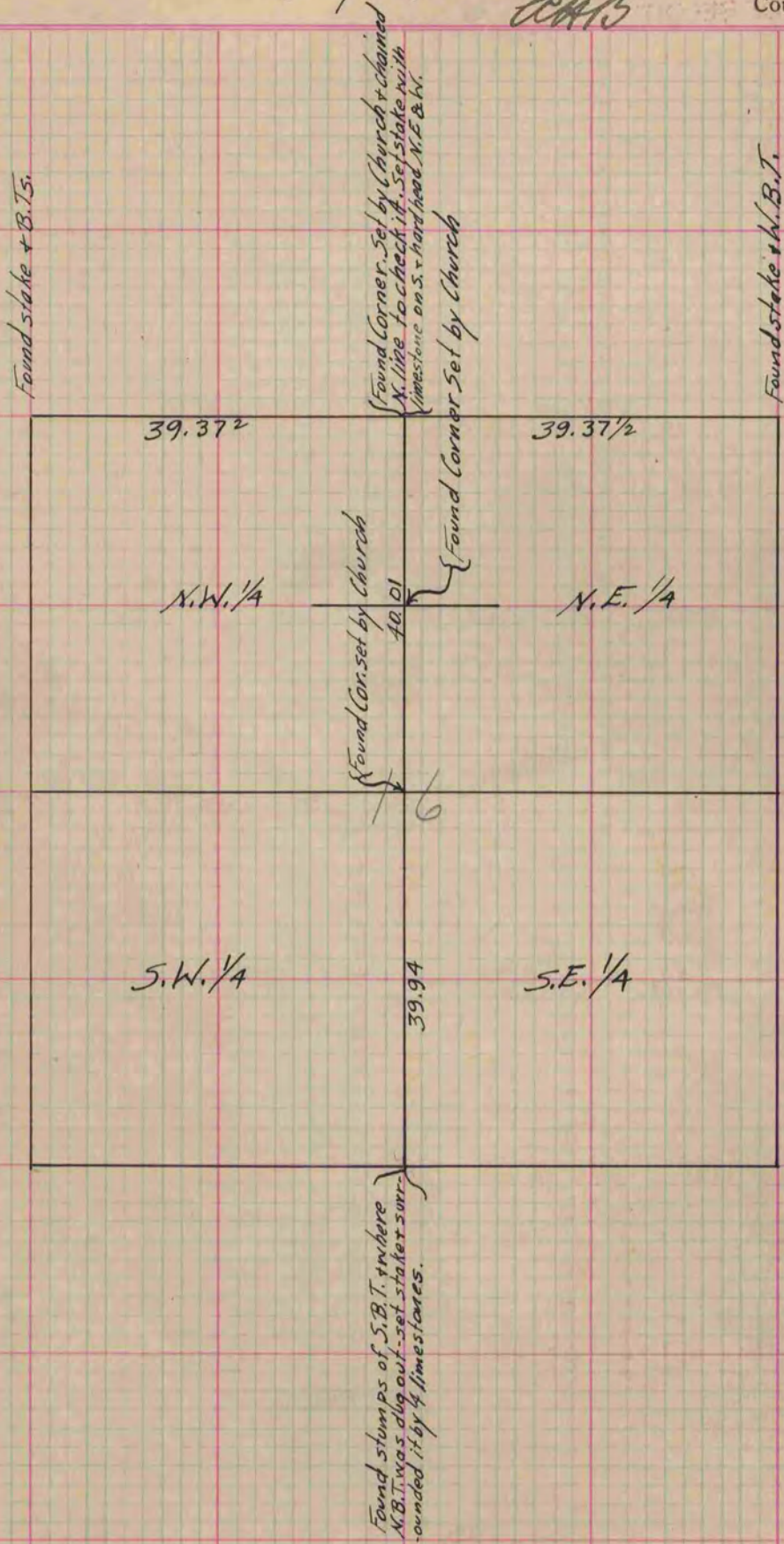
Of a Survey on Section 16 T 2 R 10 E. of the 4 P. M. in Spring Valley Township  
Rock County, Wisconsin, made May the 1<sup>st</sup> 1866

I hereby certify that the following is a correct record of said survey as made by me.

COUNTY BUILDING  
IN CITY OF БЕЛОIT

(Signed) S.D. Locke.

County Surveyor.



Copied from Page 239 Vol. 1. Original County Surveyor's Record.