

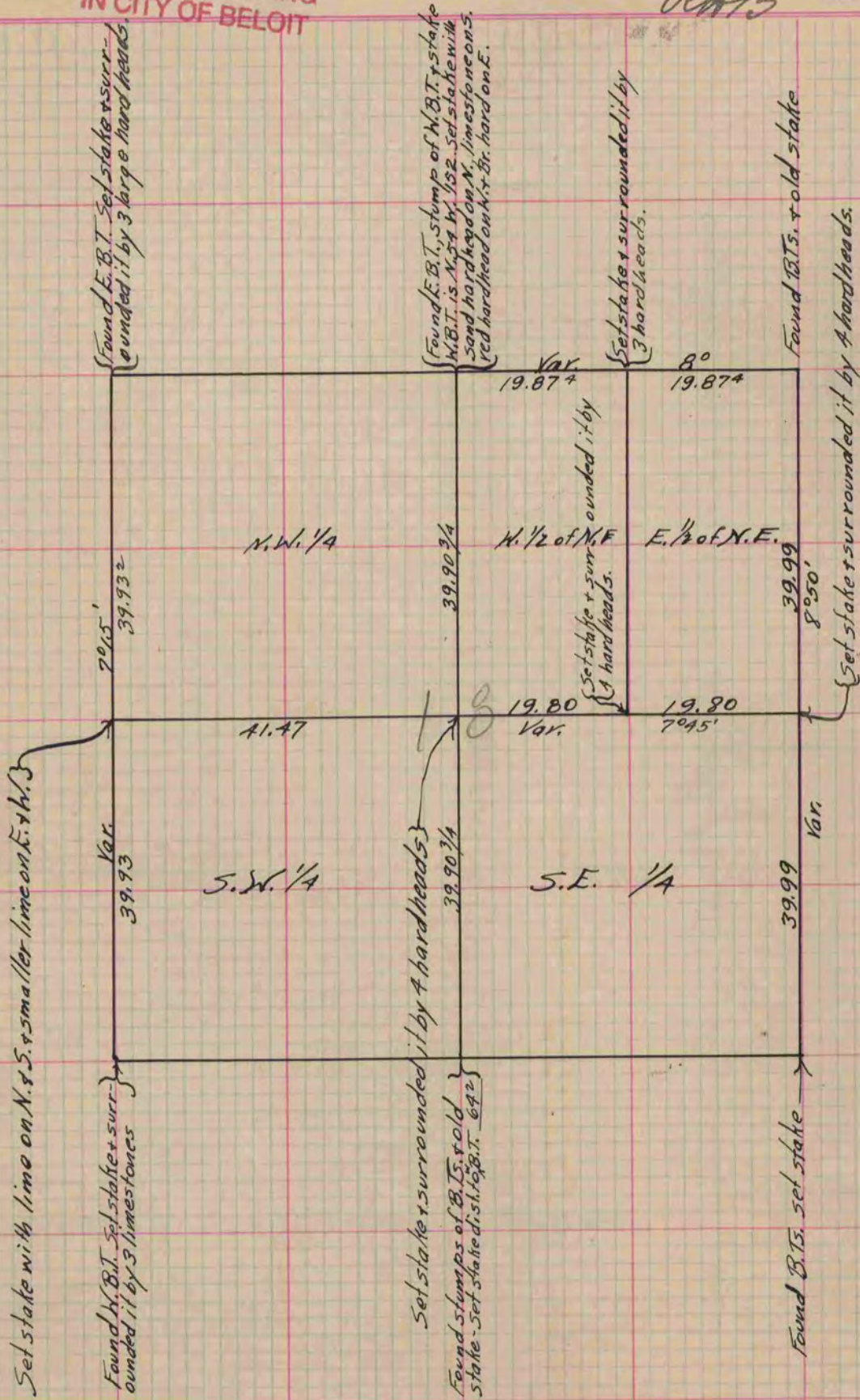
PLAT AND RECORD

Of a Survey on Section 18 T 2 R 10 E. of the 4 P. M. in Spring Valley Township
Rock County, Wisconsin, made May the 16th 1866

I hereby certify that the following is a correct record of said survey as made by me.

(Signed) S.D. Locke
RMB County Surveyor.

COUNTY BUILDING
IN CITY OF BELLOIT



Copied from lower 1/2 of Page 230 Vol. 1 Original County Surveyors Record.