

PLAT AND RECORD

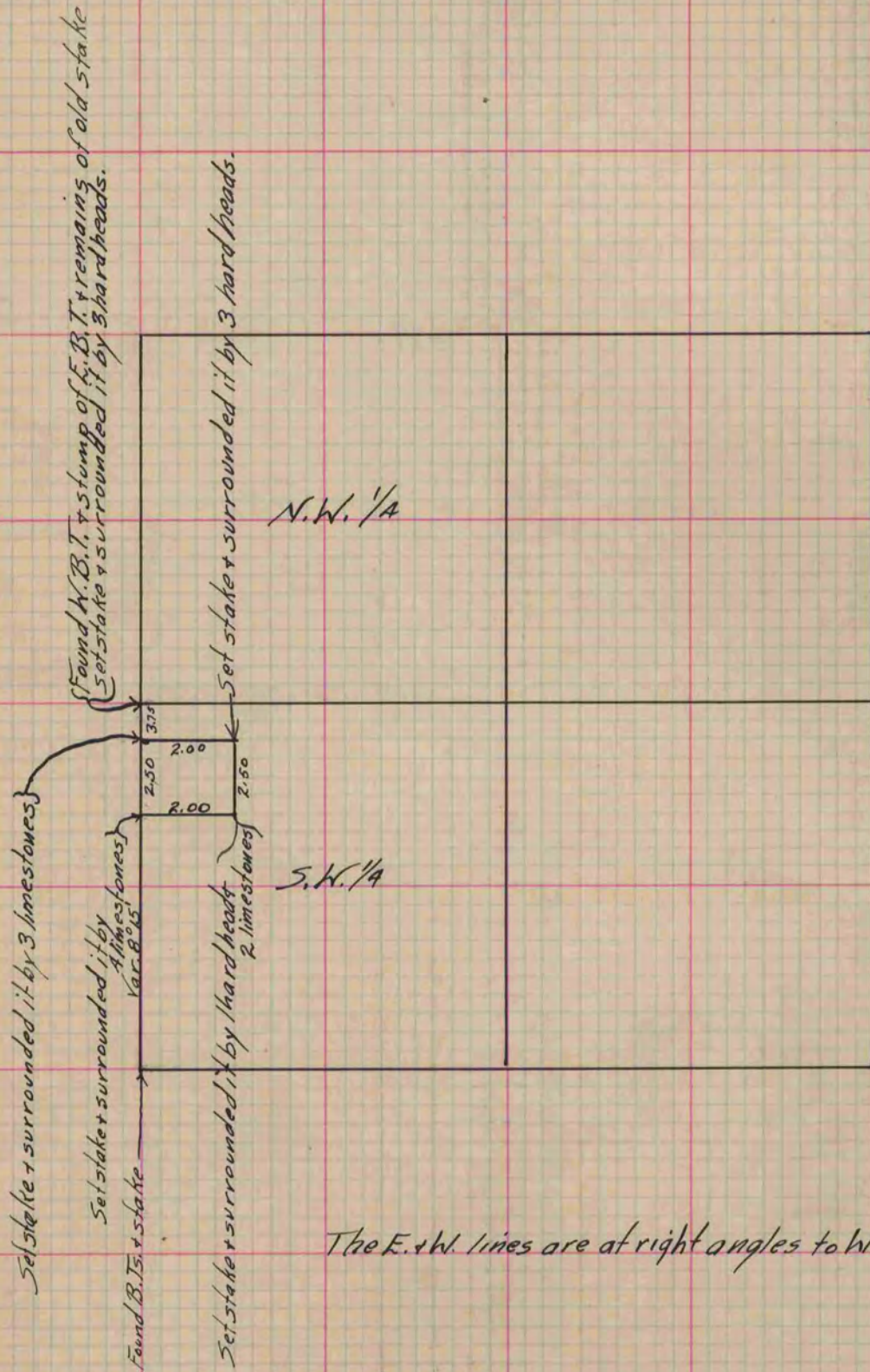
Of a Survey on Section 8 T 2 R 10 E. of the 4 P. M. in Spring Valley Township
Rock County, Wisconsin, made May the 17th 1866

I hereby certify that the following is a correct record of said survey as made by me.

COUNTY BUILDING
IN CITY OF БЕЛОIT

(Signed) S. D. Locke.
S.D.L.

County Surveyor.



Copied from Page 231 Vol. 1. Original County Surveyor's Record.