

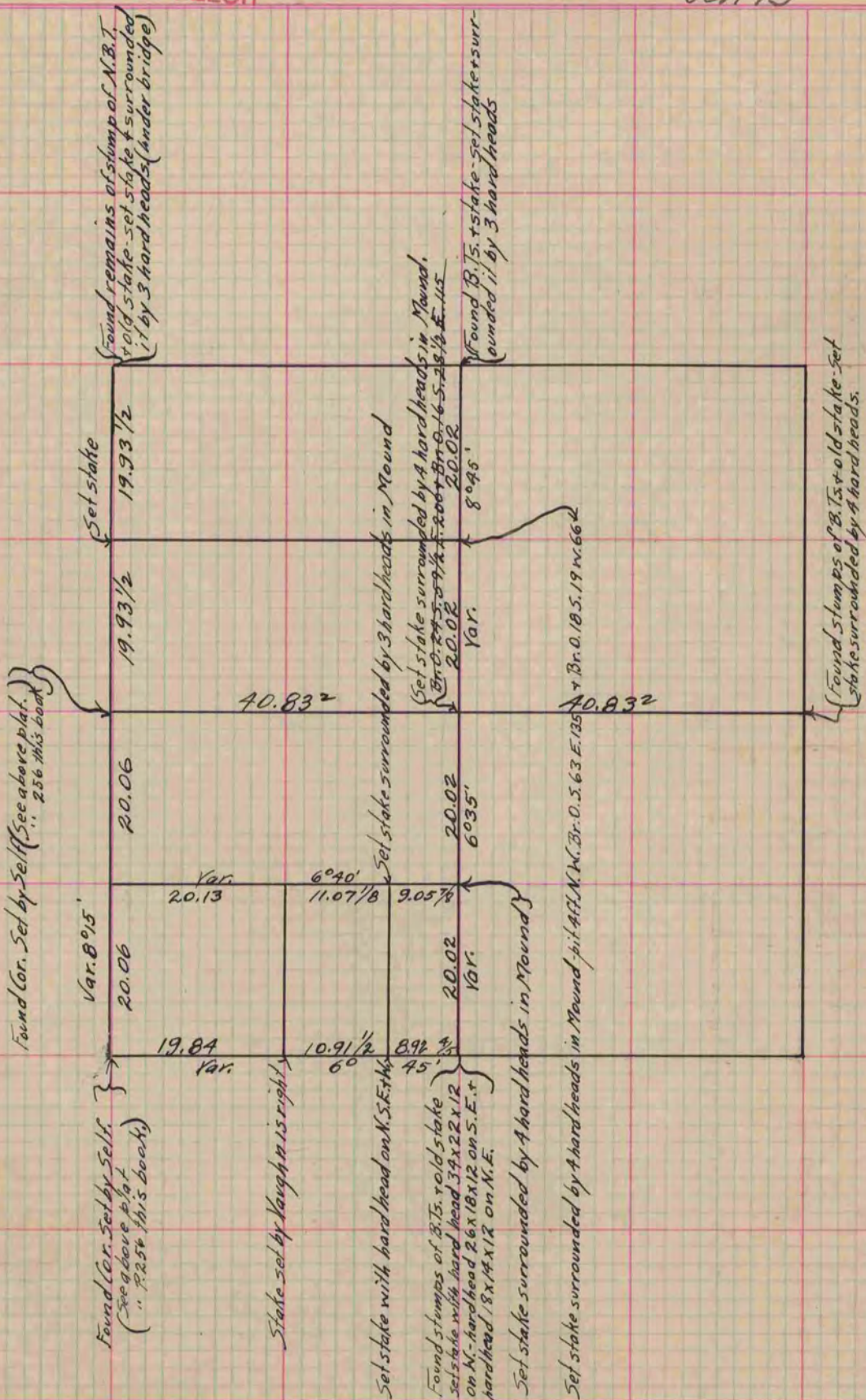
# PLAT AND RECORD

Of a Survey on Section 8 T 2 R 10 E. of the 4 P. M. in Spring Valley Township  
 Rock County, Wisconsin, made May the 18 1866

I hereby certify that the following is a correct record of said survey as made by me.

COUNTY BUILDING  
IN CITY OF BELOIT

(Signed) S. D. Locke  
S.D.L. County Surveyor.



Copied from lower 1/2 of Page 231 Vol. 1. Original County Surveyor's Record.