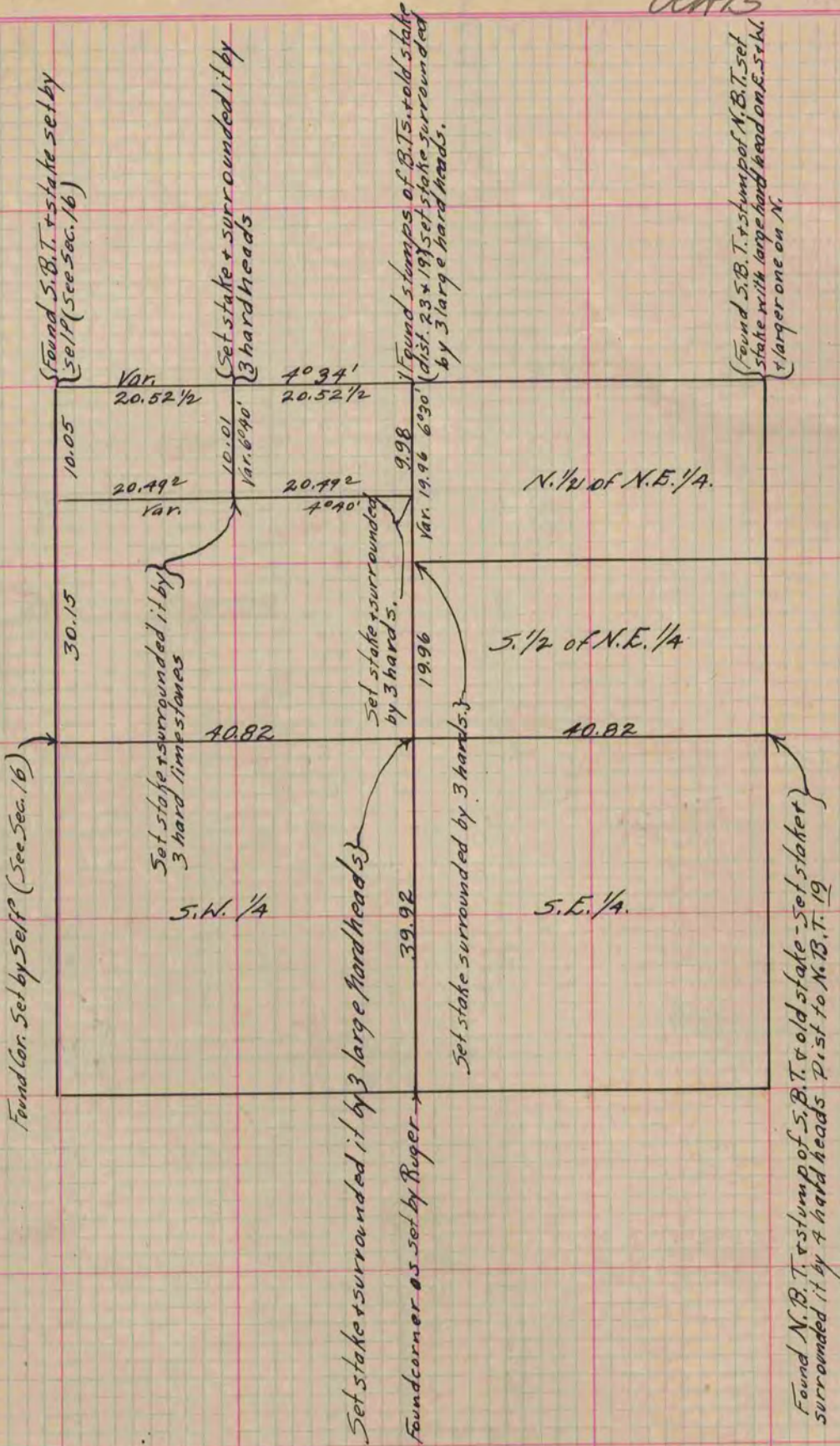


# PLAT AND RECORD

Of a Survey on Section 15 T 4 R 14 E. of the 4 P. M. in Lima Township  
Rock County, Wisconsin, made June the 7th 1866

I hereby certify that the following is a correct record of said survey as made by me.  
**COUNTY BUILDING  
IN CITY OF BELOIT**

(Signed) S. D. Locke  
RMB County Surveyor.



Copied from Upper 1/2 of Page 233 Vol. 1. Original County Surveyor's Record.