

# PLAT AND RECORD

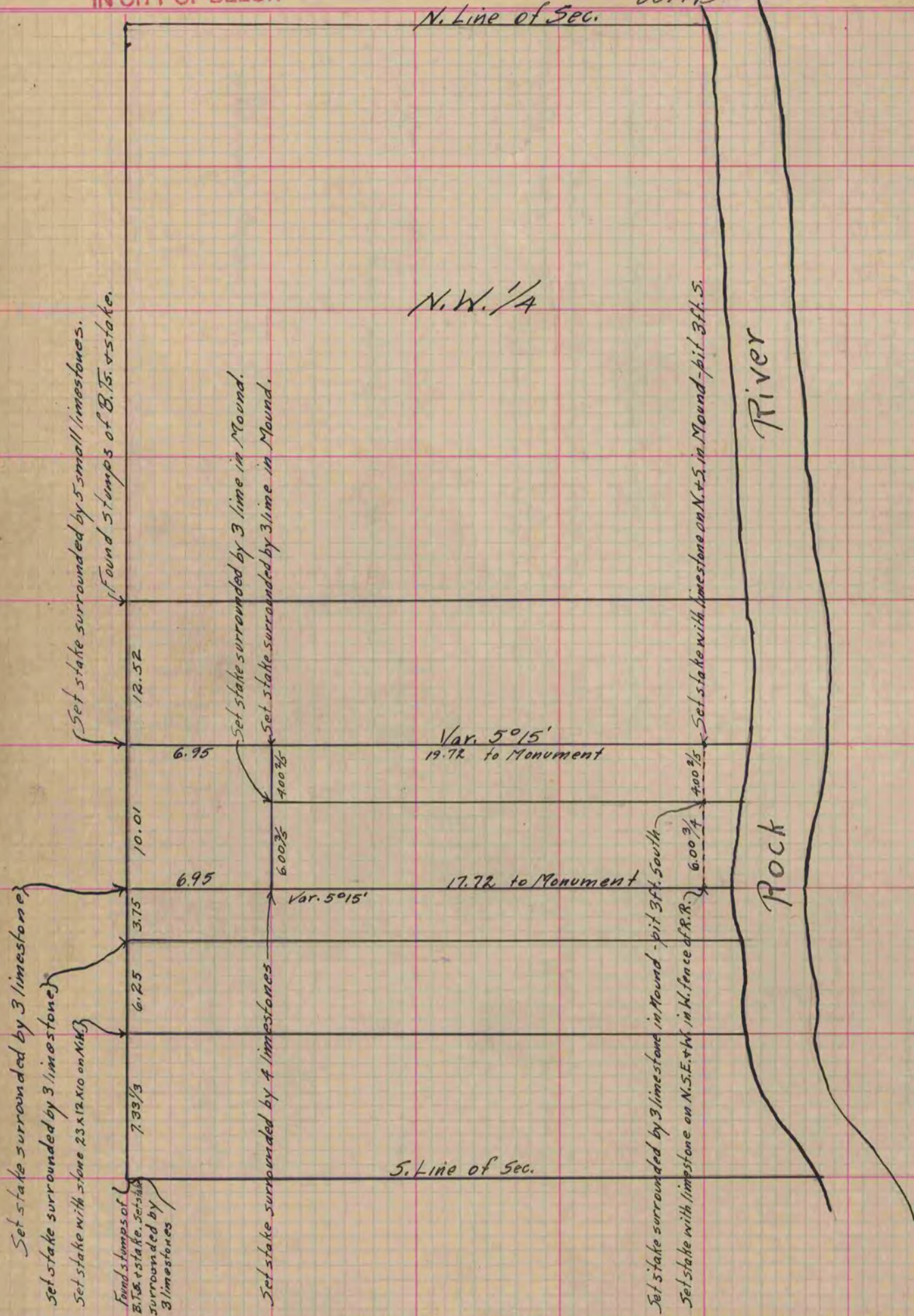
Of a Survey on Section 11 T 1 R 12 E. of the 4 P. M. in Beloit Township  
 Rock County, Wisconsin, made June the 15<sup>th</sup> 1866

I hereby certify that the following is a correct record of said survey as made by me.

COUNTY BUILDING  
 IN CITY OF БЕЛОИТ

(Signed) S. D. Locke  
 S.D.L.

County Surveyor.



Ran E + W. lines with the same variation of - or at right angles to the West Sec. line, as their deeds seemed so to require.

Copied from Page 235 Vol. 1. Original County Surveyors Record.