

PLAT AND RECORD

265

Of a Survey on Section 6 T 2 R 12 E. of the 4 P. M. in Rock Township

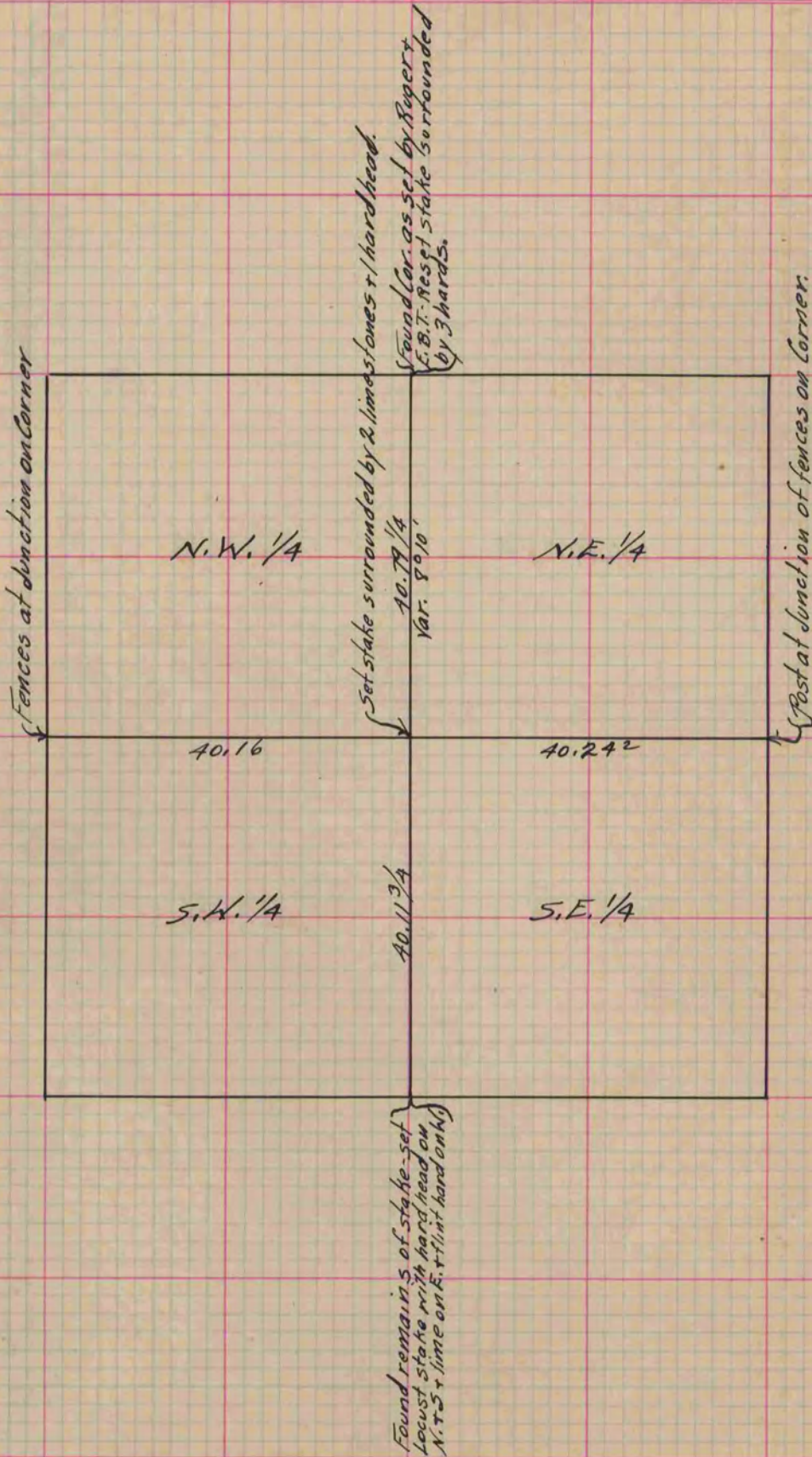
Rock County, Wisconsin, made July the 9th 1866

I hereby certify that the following is a correct record of said survey as made by me.

COUNTY BUILDING
IN CITY OF BELOIT

(Signed) S. D. Locke
S.D.L.

County Surveyor.



Copied from Page 236 (lower 1/2) Vol. 1. Original County Surveyor's Record.