

PLAT AND RECORD

267

Of a Survey on Section 3 T 2 R 12 E. of the 4 P. M. in Rock Township

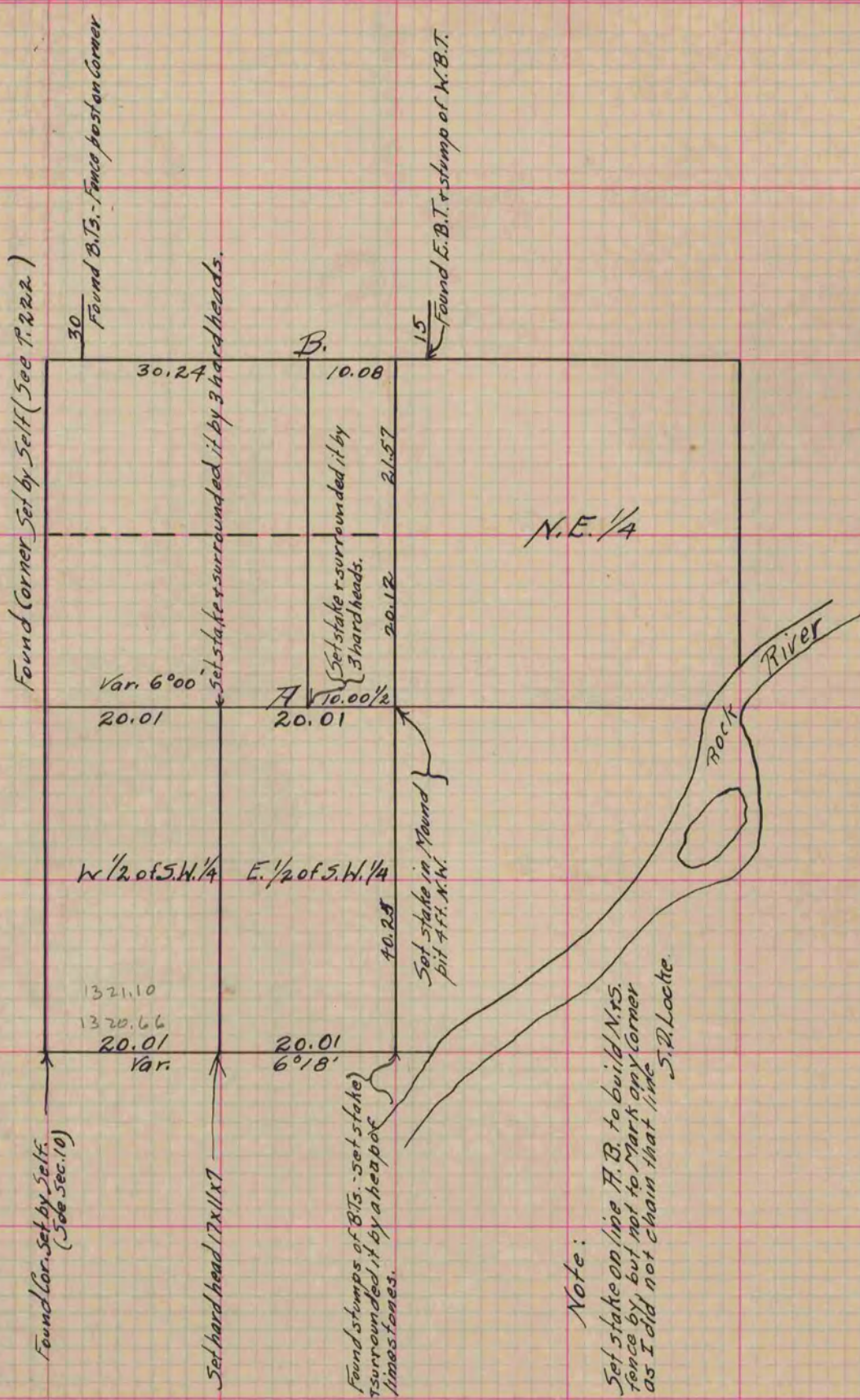
Rock County, Wisconsin, made July the 6th 1866

I hereby certify that the following is a correct record of said survey as made by me.

COUNTY BUILDING
IN CITY OF BELOIT

(Signed) S. D. Locke.
S.D.L.

County Surveyor.



Copied from Page 237 Vol. 1. Original County Surveyor's Record.