

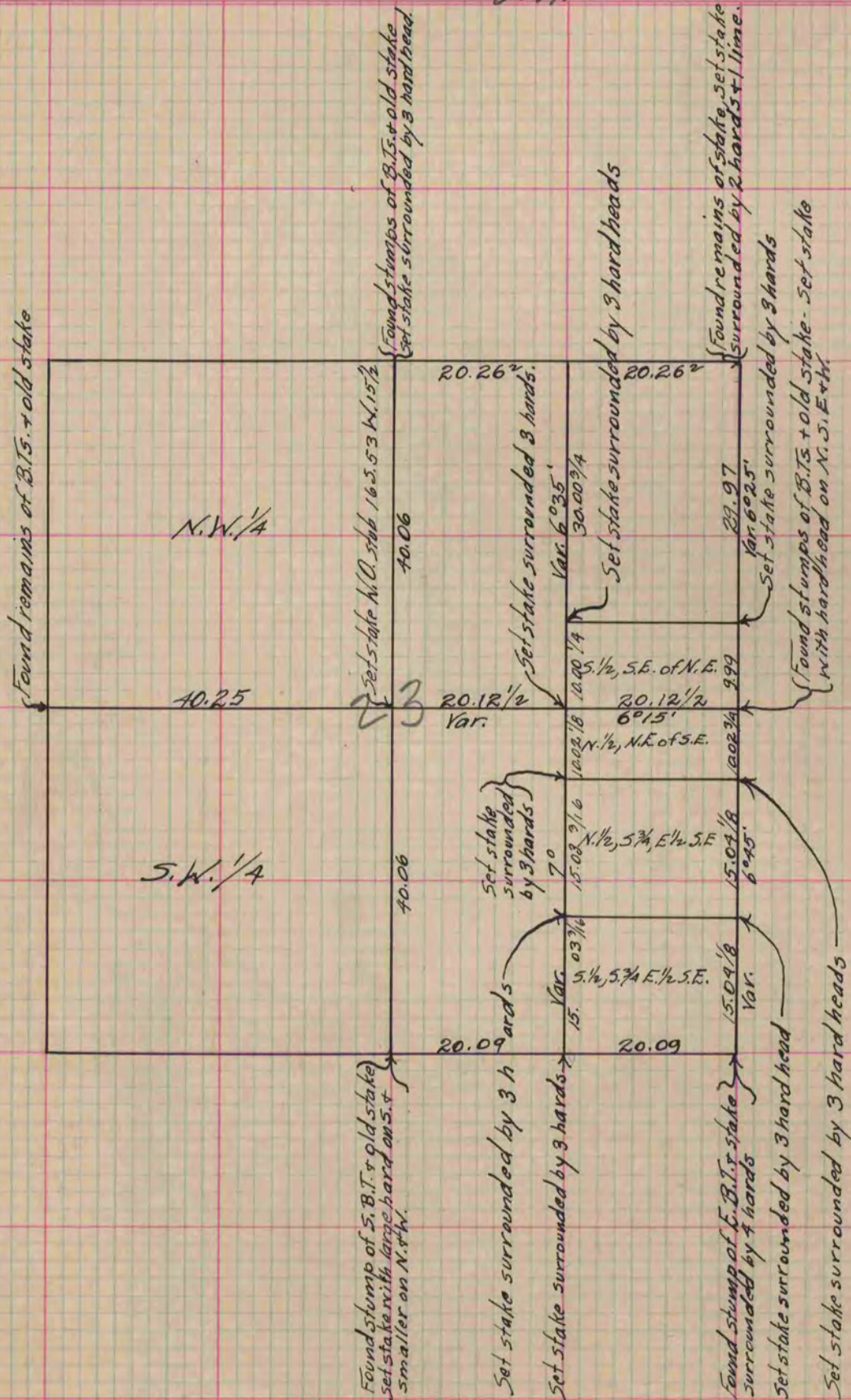
PLAT AND RECORD

Of a Survey on Section 23 T 1 R 14 E. of the 4 P. M. in Clinton Township
Rock County, Wisconsin, made July the 16 & 17th 1866

I hereby certify that the following is a correct record of said survey as made by me.

(Signed) S. D. Locke
S. D. Locke County Surveyor.

COUNTY BUILDING
IN CITY OF BELOIT



Copied from Page 238 Vol. 1. Original County Surveyor's Record.