

PLAT AND RECORD

269

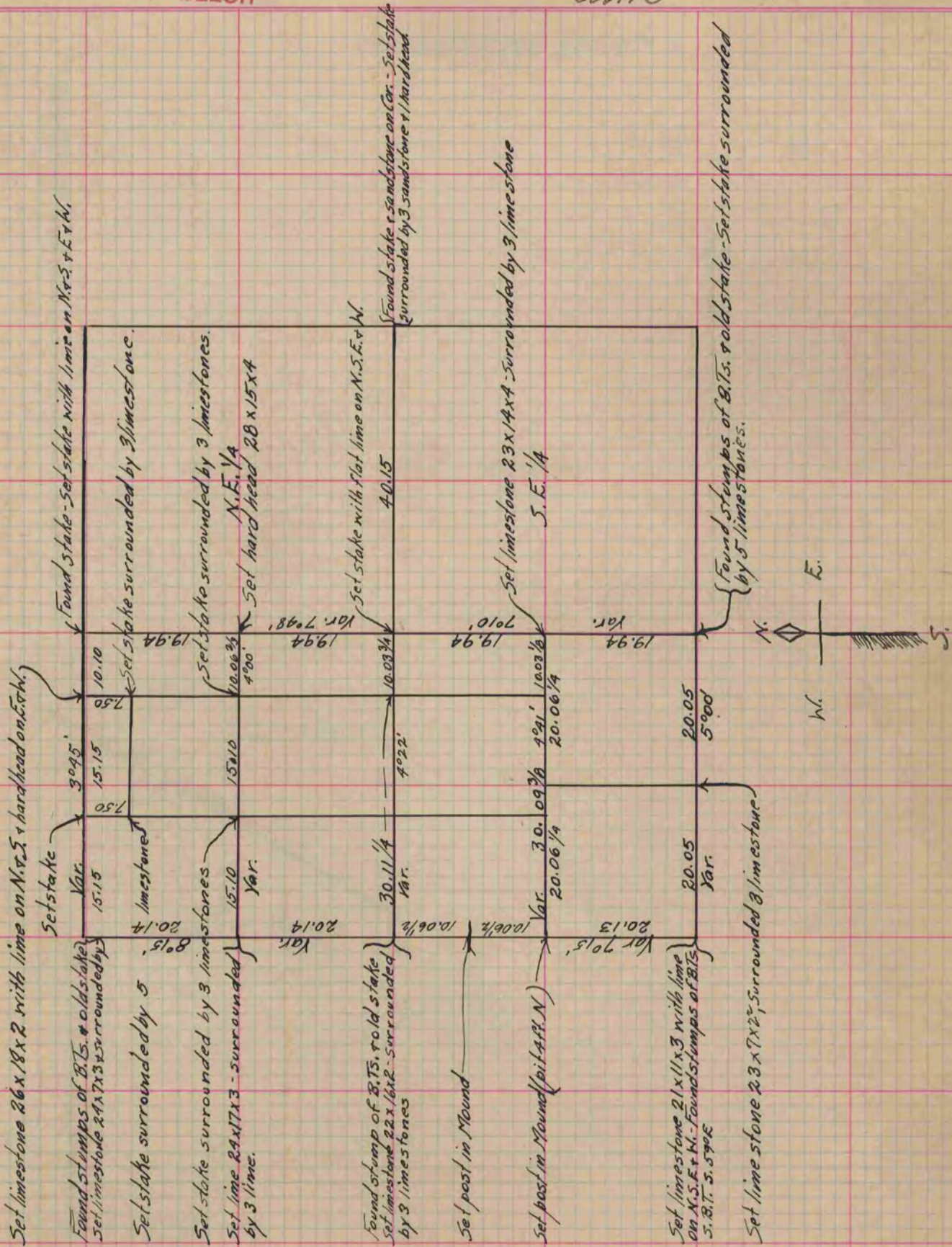
Of a Survey on Section 24 T 2 R 10 E. of the 4 P. M. in Spring Valley Township
 Rock County, Wisconsin, made October the 3, 4 & 5 1866

I hereby certify that the following is a correct record of said survey as made by me.

COUNTY BUILDING
 IN CITY OF БЕЛОIT

(Signed) S. D. Locke
S.D.L.

County Surveyor.



Copied from Page 238 Vol. 1. Original County Surveyor's Record.