

PLAT AND RECORD

Of a Survey on Section 3 T 1 R 14 E. of the 4 P. M. in Clinton Township

Rock County, Wisconsin, made October the 9th 1866

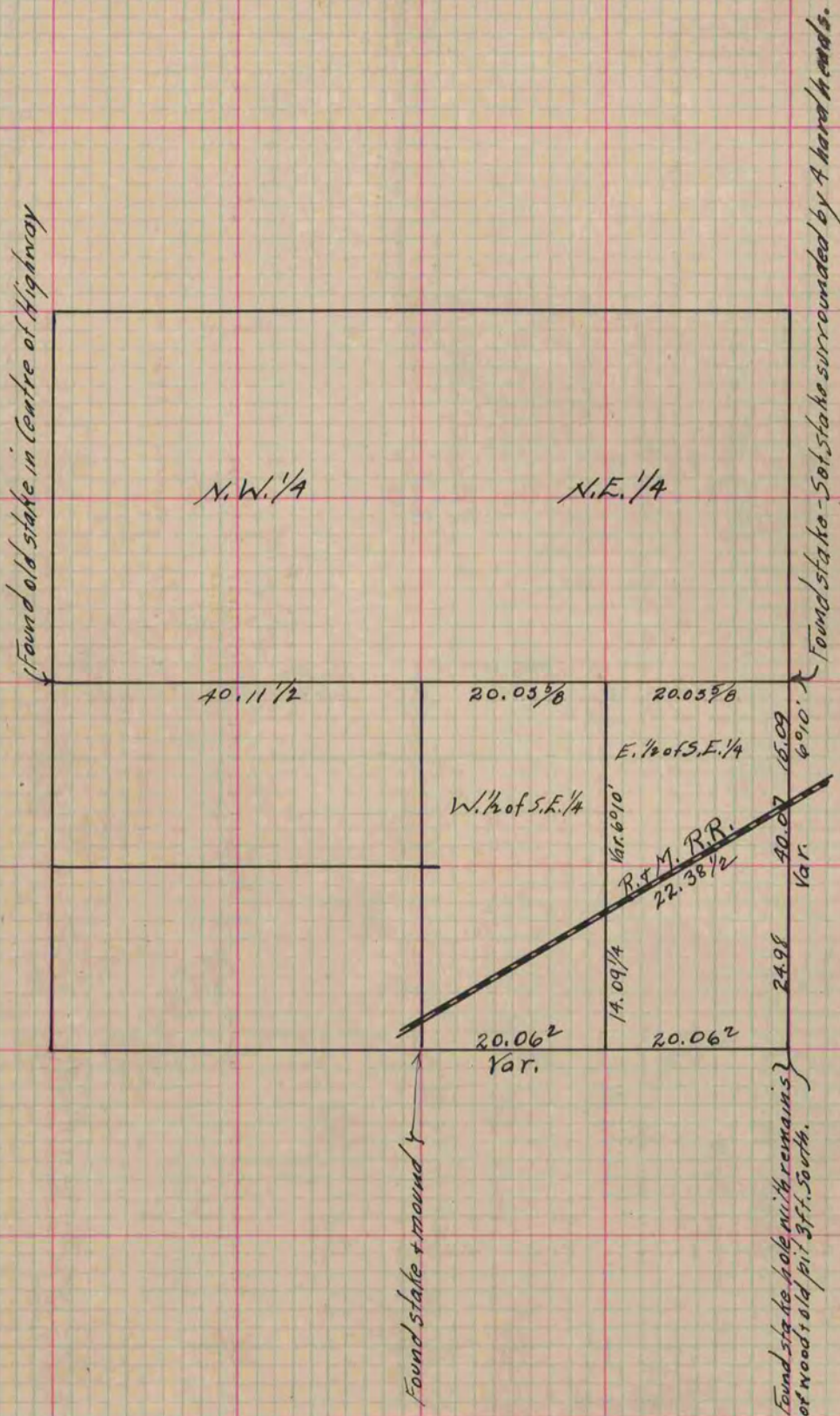
I hereby certify that the following is a correct record of said survey as made by me.

COUNTY BUILDING
IN CITY OF BELOIT

(Signed) S. D. Locke,
S.D.

County Surveyor.

I. A. Snyder + Self Chainmen.



Copied from Page 239 Vol. 1. Original County Surveyor's Record.