

PLAT AND RECORD

271

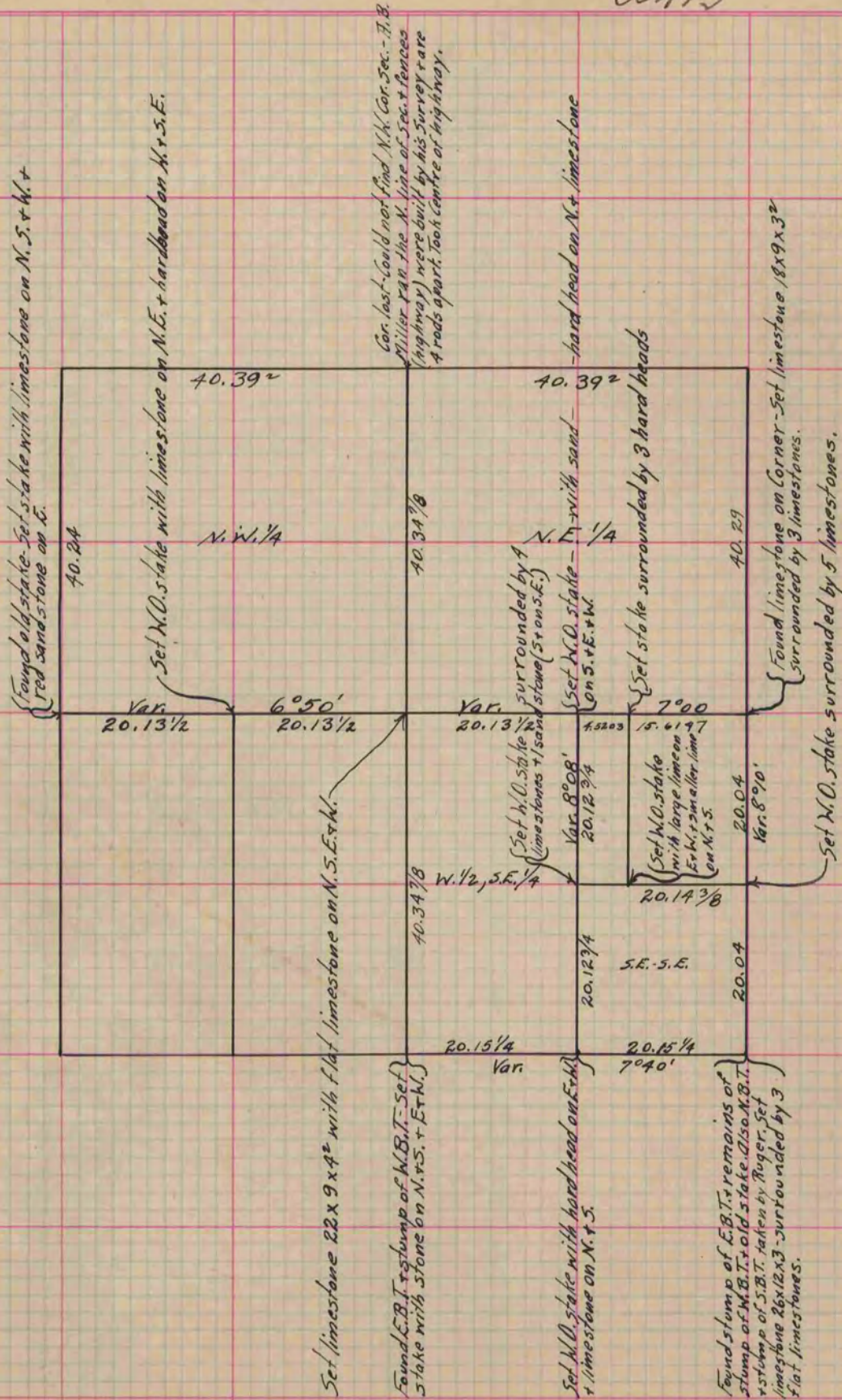
Of a Survey on Section 34 T 3 R 12 E. of the 4 P. M. in Janesville Township
Rock County, Wisconsin, made October the 22+23 1866

I hereby certify that the following is a correct record of said survey as made by me.

COUNTY BUILDING
IN CITY OF БЕЛОIT

(Signed) S. D. Locke
S. D. Locke

County Surveyor.



Copied from Page 239 Vol. 1. Original County Surveyor's Record.