

PLAT AND RECORD

Of a Survey on Section 26 T 1 R 14 E. of the 4 P. M. in Clinton Township

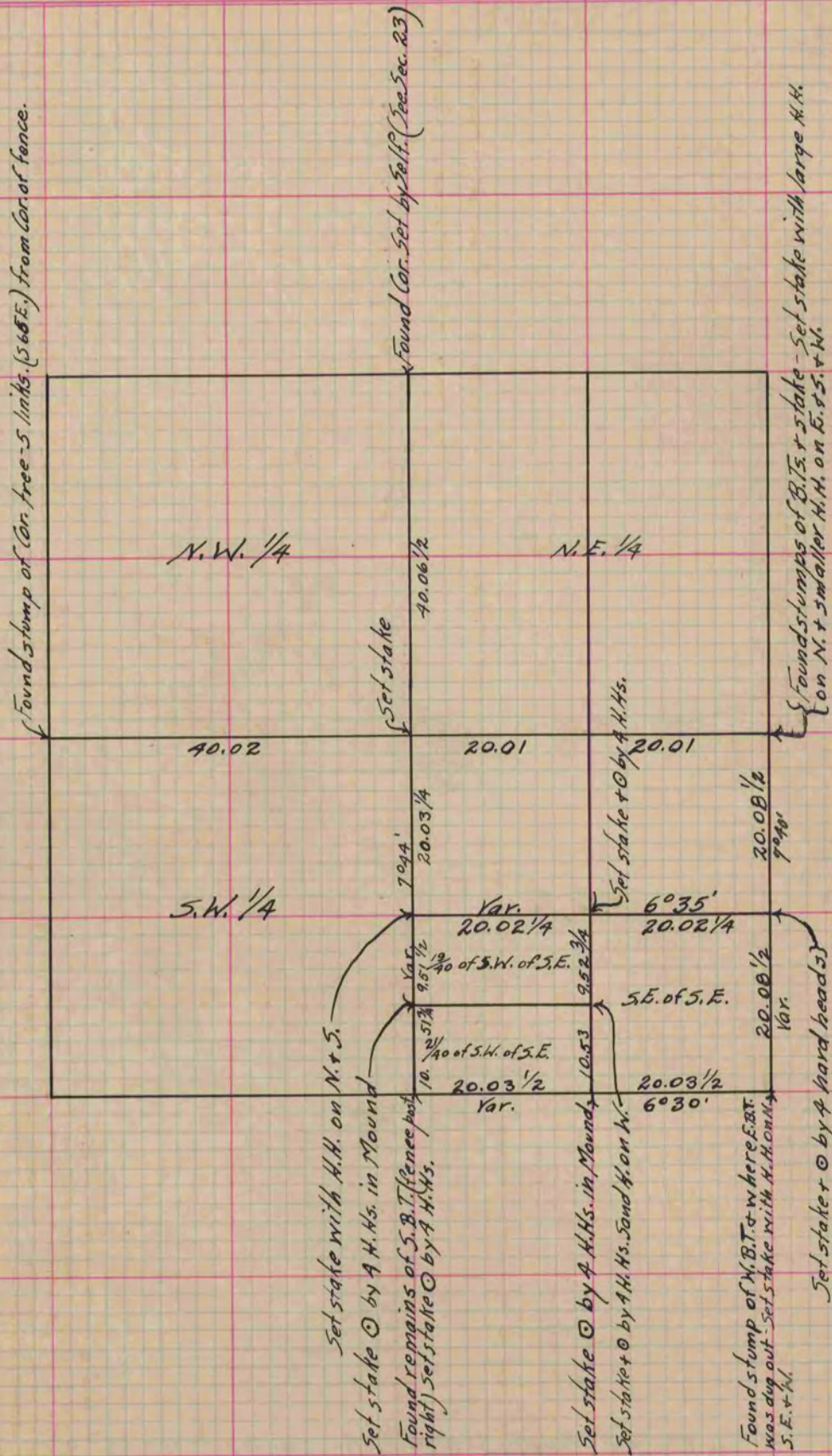
Rock County, Wisconsin, made November the 28 & 29 1866

I hereby certify that the following is a correct record of said survey as made by me.

COUNTY BUILDING
IN CITY OF БЕЛОIT

(Signed) S.D. Locke.
RMS

County Surveyor.



Copied from Page 240 Vol. Original County Surveyor's Record.