

PLAT AND RECORD

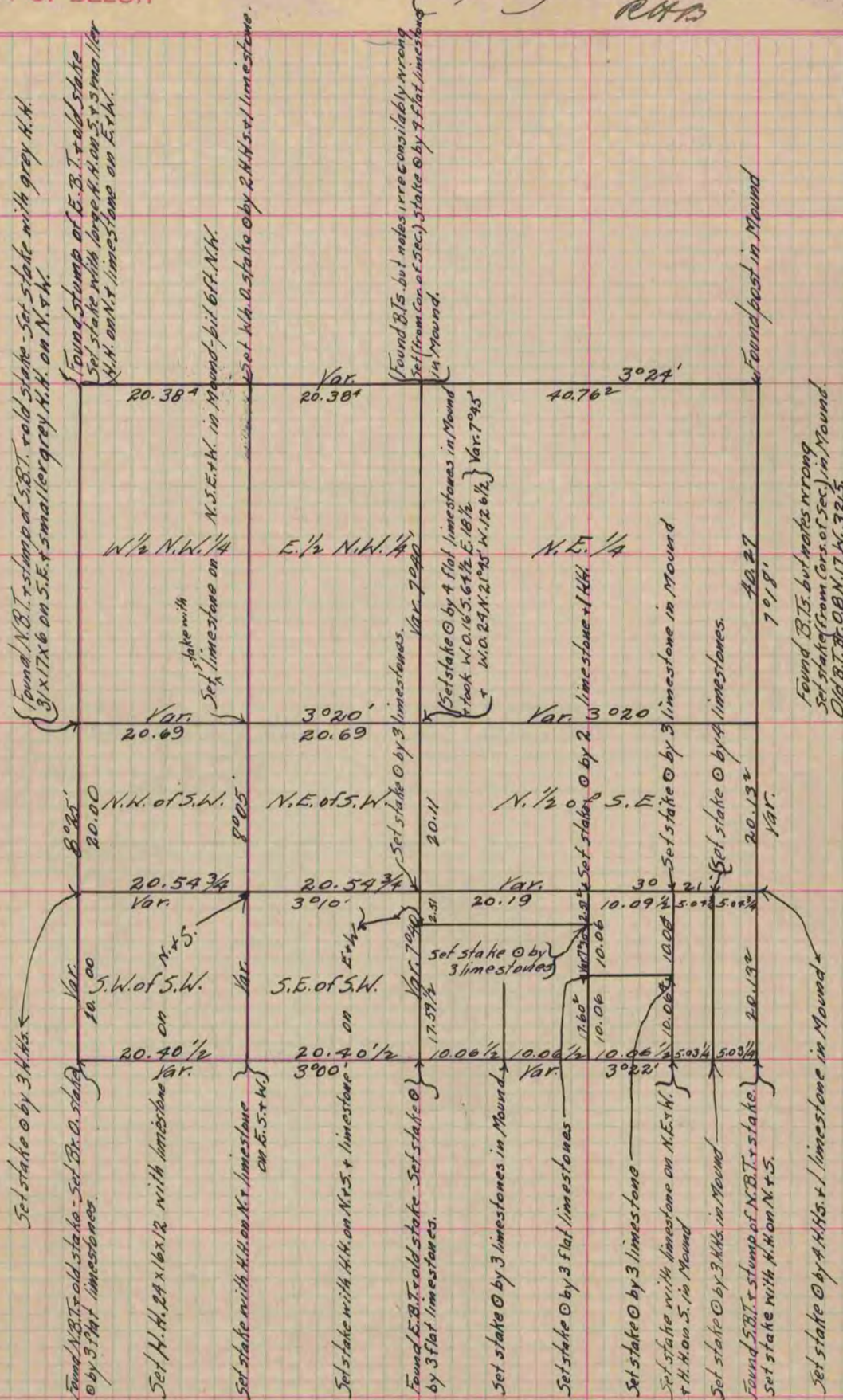
Of a Survey on Section 12 T 2 R 10 E. of the 4 P. M. in Spring Valley Township
Rock County, Wisconsin, made May the 7, 8, 14 & 15th 1867

I hereby certify that the following is a correct record of said survey as made by me.

COUNTY BUILDING
IN CITY OF BELoit

(Signed) S. D. Locke
R.H.S.

County Surveyor.



Copied From Page 246 Vol. Original County Surveyor's Record.