

PLAT AND RECORD

Of a Survey on Section 20 T 2 R 11 E. of the 4 P. M. in Plymouth Township

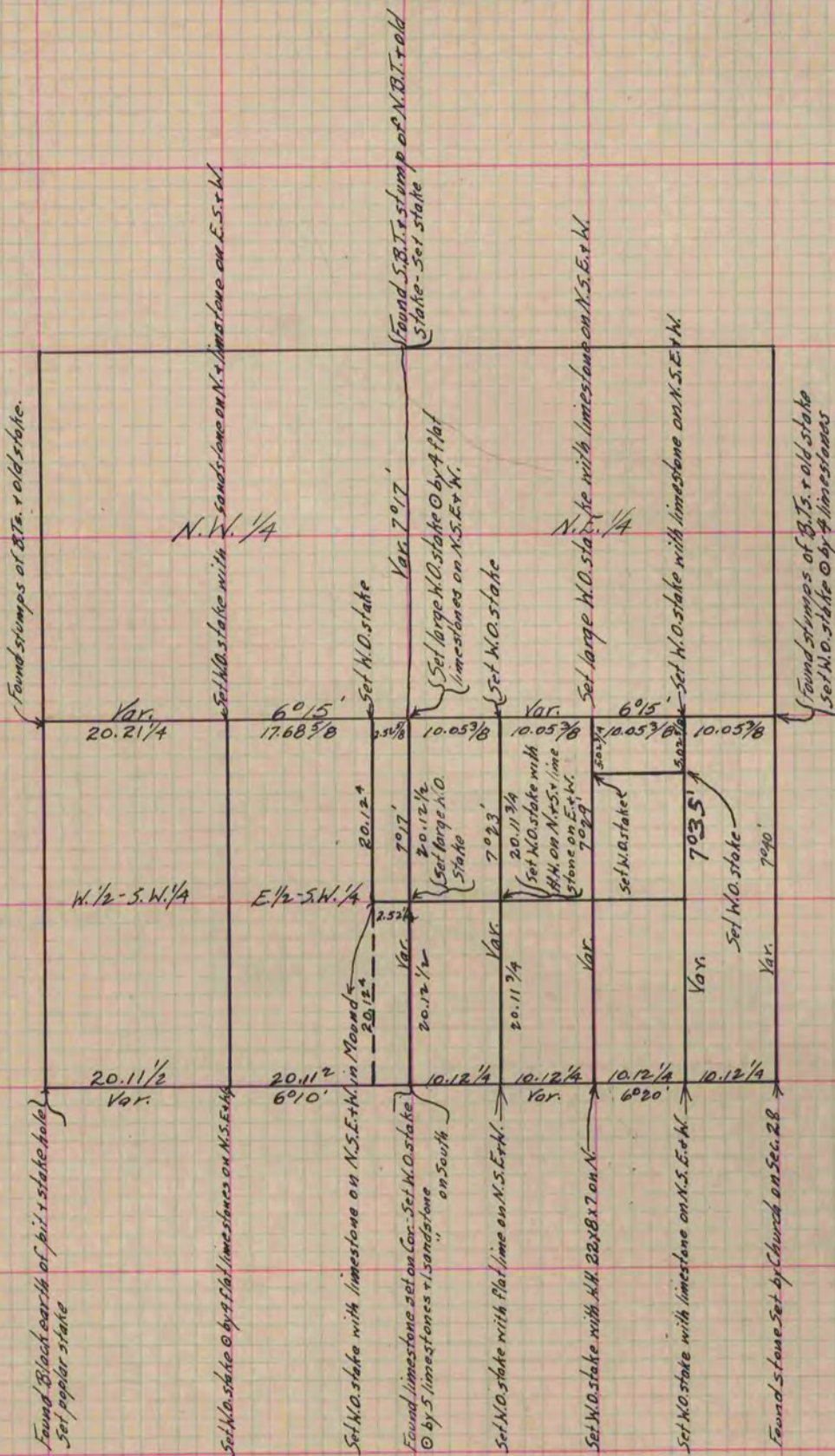
Rock County, Wisconsin, made May the 15 & 16th 1867

I hereby certify that the following is a correct record of said survey as made by me.

COUNTY BUILDING
IN CITY OF БЕЛОIT

(Signed) S.D. Locke.

County Surveyor.



Copied from Page 247 Vol. 1. Original County Surveyor's Record.