

PLAT AND RECORD

Of a Survey on Section 4 T 2 R 10 E. of the 4 P. M. in Spring Valley Township

Rock County, Wisconsin, made June the 9th & 10th 1867

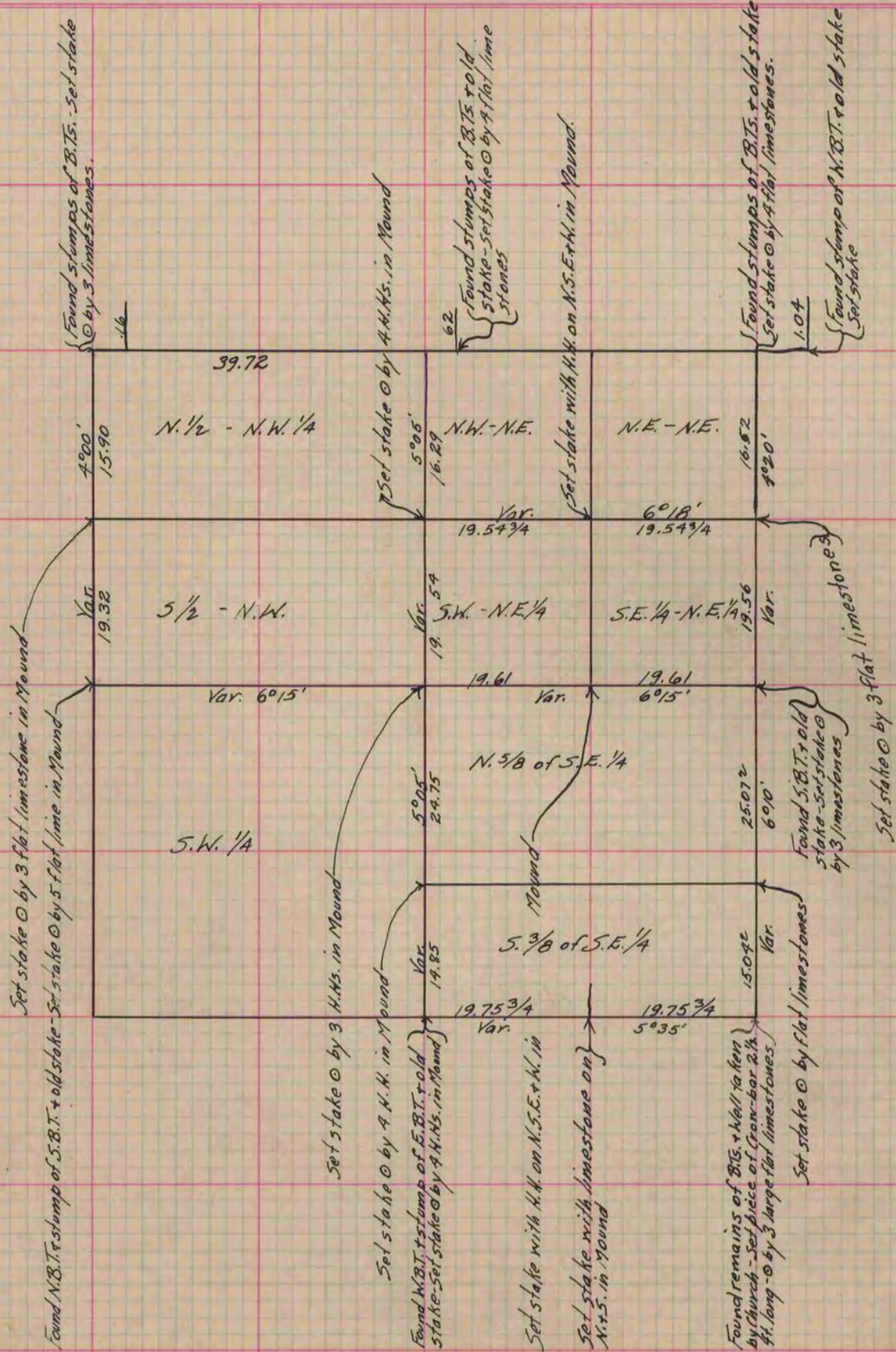
I hereby certify that the following is a correct record of said survey as made by me.

COUNTY BUILDING
IN CITY OF БЕЛОИТ

(Signed) S.D. Locke

RMS

County Surveyor.



Copied from Page 248 Vol. 1. Original County Surveyor's Record