

PLAT AND RECORD

289

Of a Survey on Section 14 T 2 R 12 E. of the 4 P. M. in Rock Township

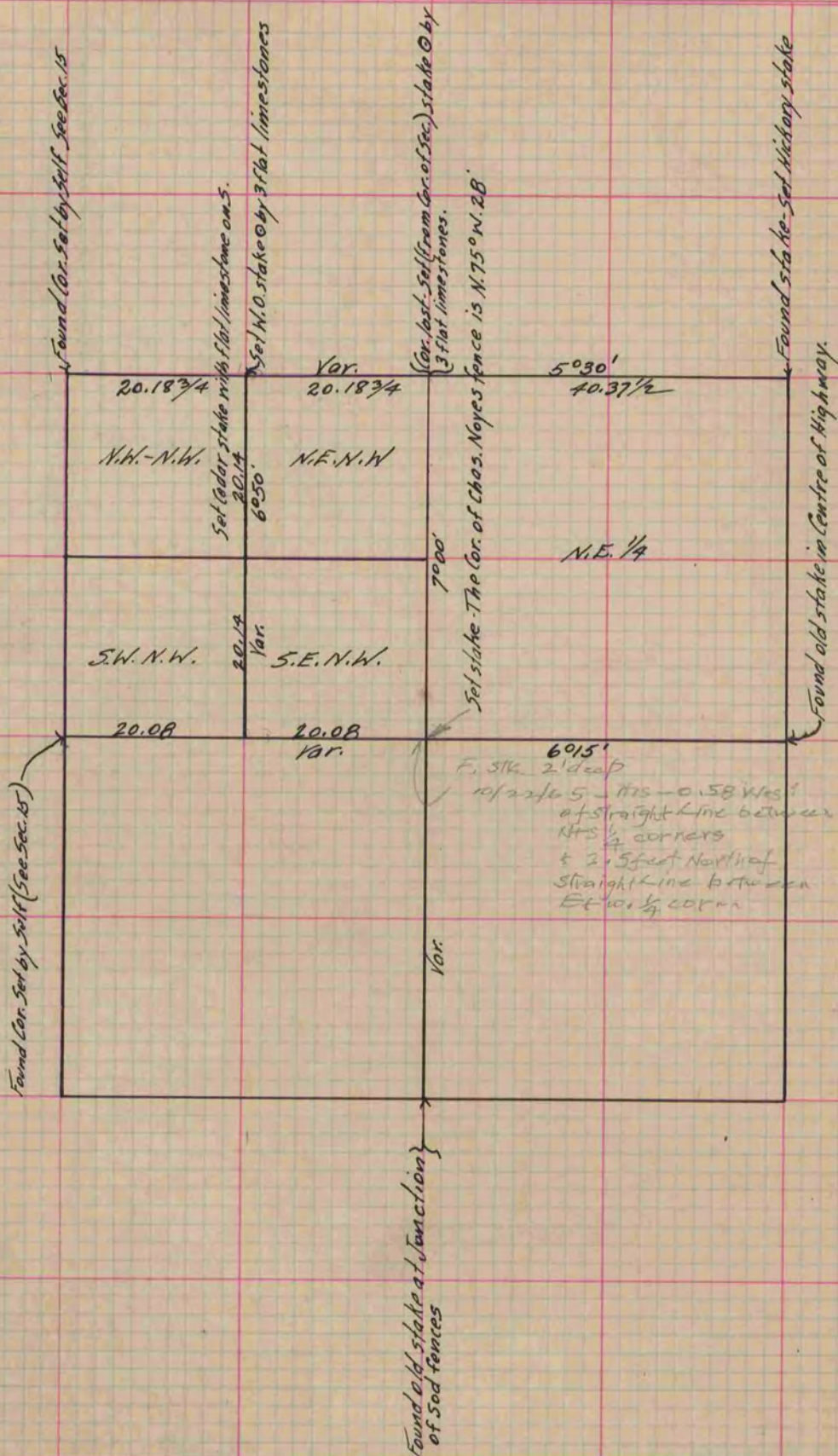
Rock County, Wisconsin, made September the 9th 1867

I hereby certify that the following is a correct record of said survey as made by me.

COUNTY BUILDING
IN CITY OF БЕЛОIT

(Signed) S.D. Locke
S.D.L.

County Surveyor.



Copied from Page 249 Vol. 1. Original County Surveyor's Record.