

# PLAT AND RECORD

Of a Survey on Section 22 T 3 R 13 E. of the 4 P. M. in Harmony Township

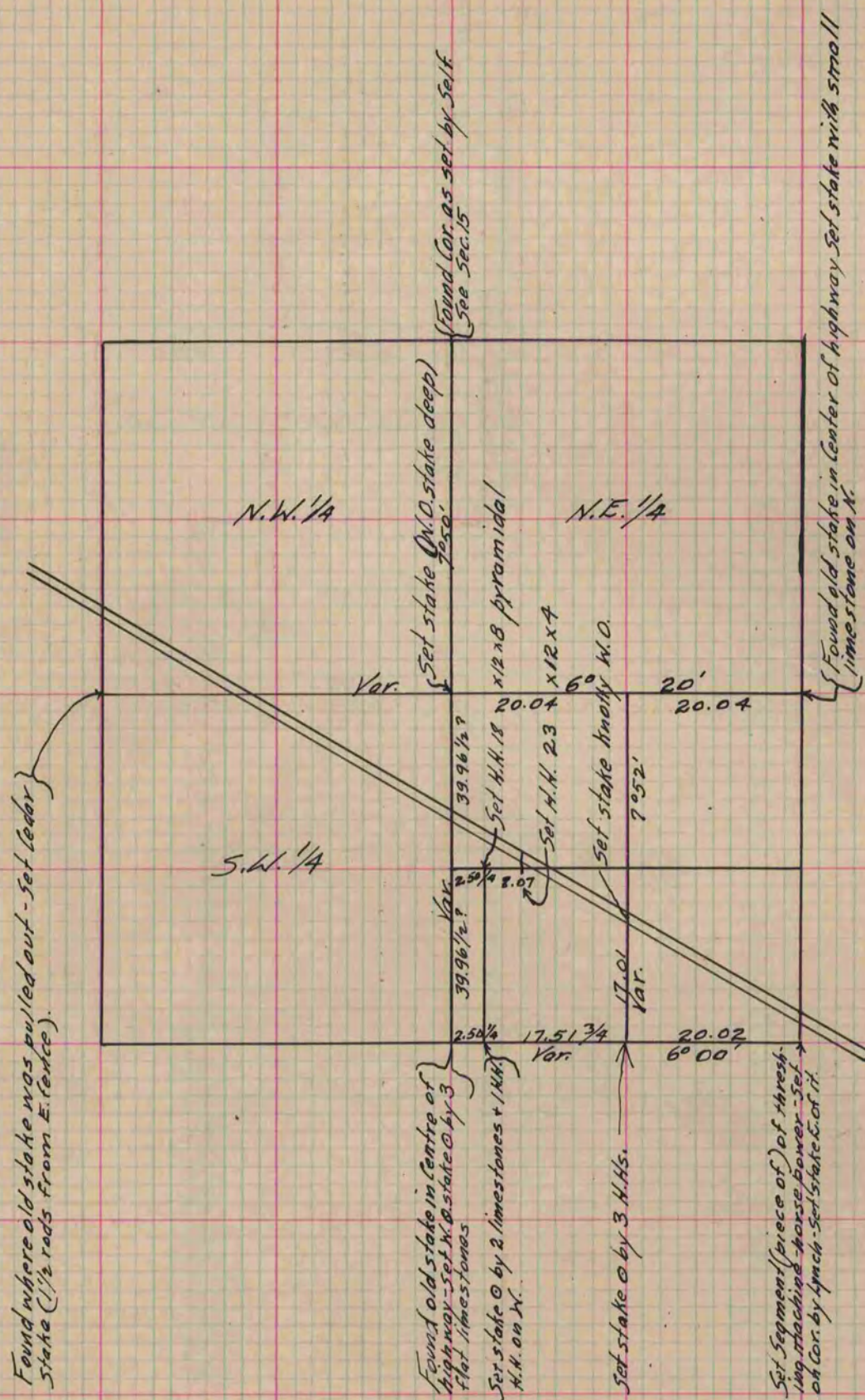
Rock County, Wisconsin, made October the 22<sup>nd</sup> 1867

I hereby certify that the following is a correct record of said survey as made by me.

COUNTY BUILDING  
IN CITY OF БЕЛОIT

(Signed) S. D. Locke  
RMB

County Surveyor.



Copied from Page 252 Vol. 1. Original County Surveyor's Record.