

# PLAT AND RECORD

20 R4B7E

Of a Survey on Section 30 T 4 R 13 E. of the 4 P. M. in Milton Township

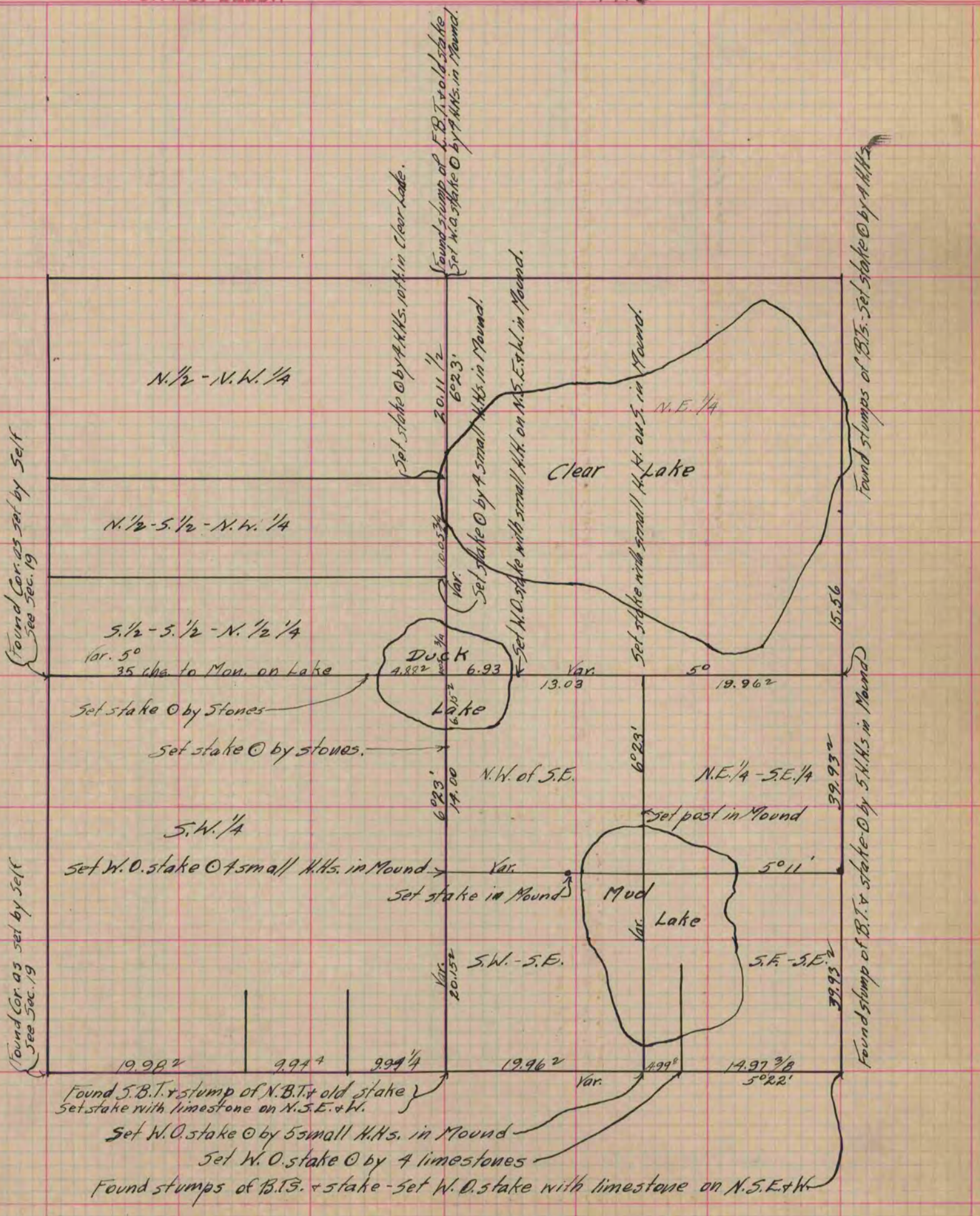
Rock County, Wisconsin, made October the 28, 29 + 30 1867

I hereby certify that the following is a correct record of said survey as made by me.

COUNTY BUILDING  
IN CITY OF BELOIT

(Signed) S. D. Locke  
S.D.L.

County Surveyor.



Copied from Page 254 Vol. 1. Original County Surveyor's Record.