

PLAT AND RECORD

Of a Survey on Section 31 T 3 R 11 E. of the 4 P. M. in Center Township

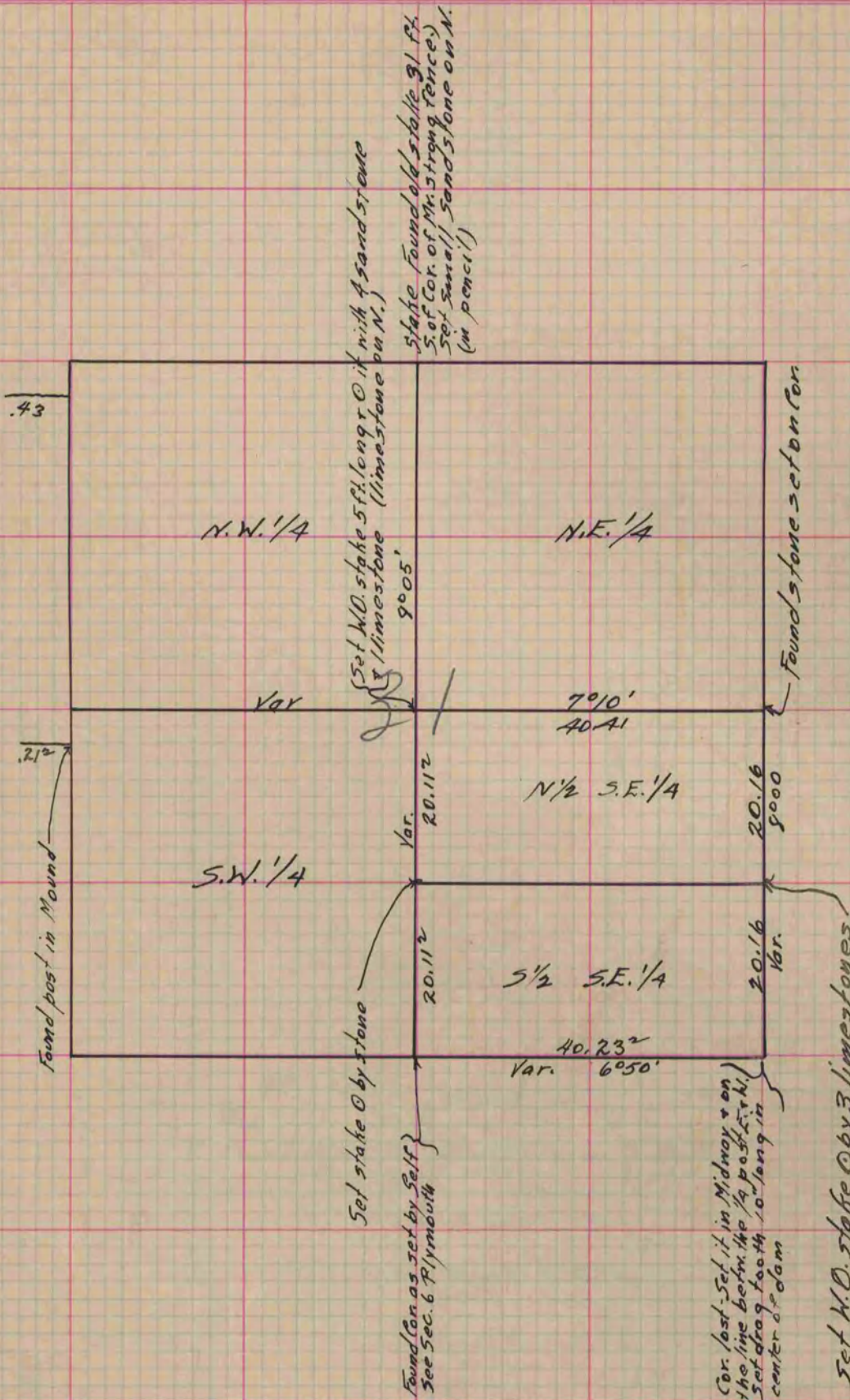
Rock County, Wisconsin, made December the 30 1867

I hereby certify that the following is a correct record of said survey as made by me.

COUNTY BUILDING
IN CITY OF BELOIT

(Signed) S.D. Locke
RMB

County Surveyor.



Copied from Page 259 Vol. 1. Original County Surveyor's Record.