

PLAT AND RECORD

Of a Survey on Section 32 T 3 R 11 E. of the 4 P. M. in Centre Township

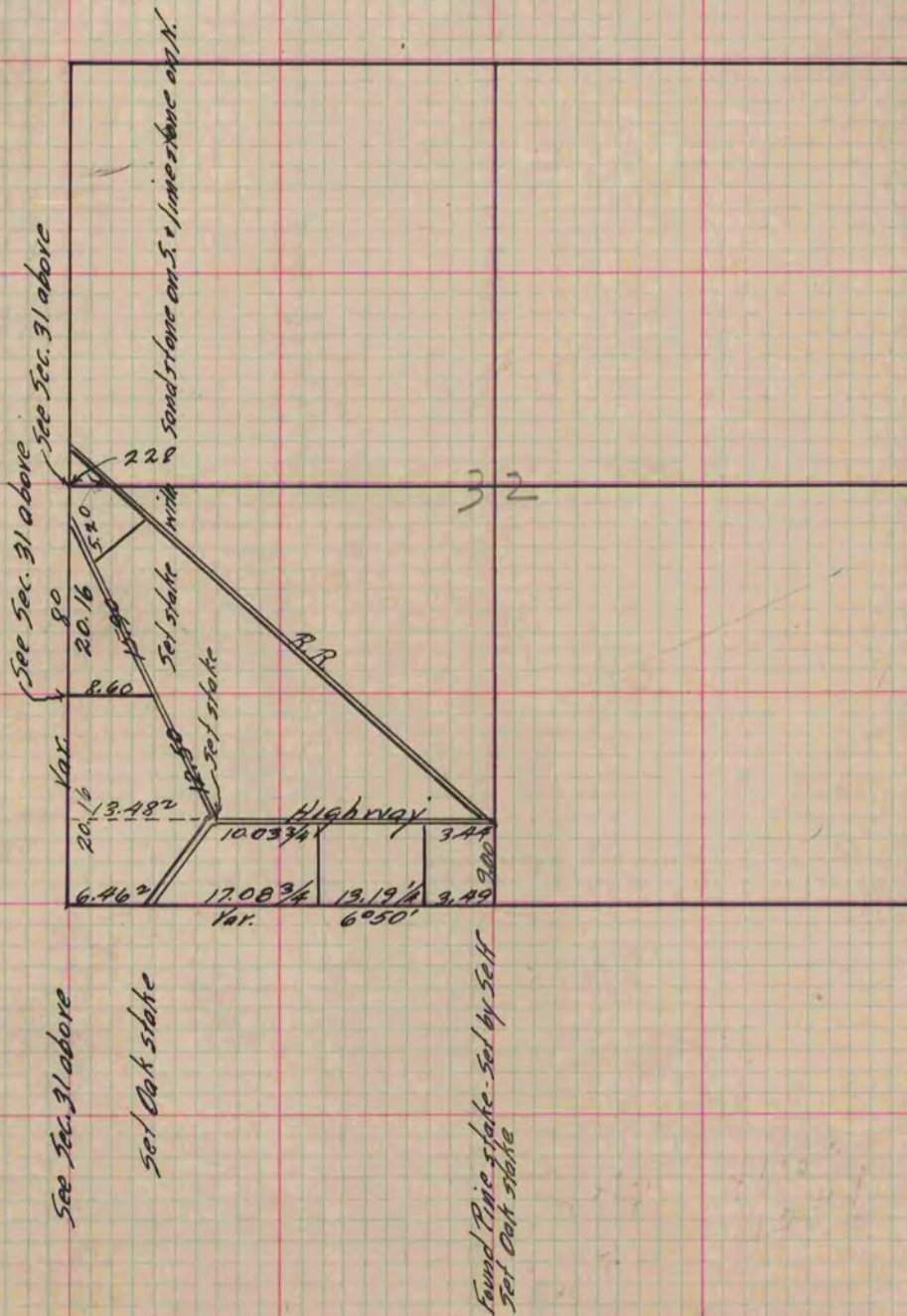
Rock County, Wisconsin, made December the 30 & 31 1867

I hereby certify that the following is a correct record of said survey as made by me.

COUNTY BUILDING
IN CITY OF BELOIT

(Signed) S. D. Locke
S. D. Locke

County Surveyor.



Copied From Page 259 Vol. 1 Original County Surveyor's Record.